

SONORA

## ---RED FEDERAL LIBRE---

1 Agua Prieta - Imuris	MEX-002
2 Guaymas - Hermosillo	MEX-015
3 Hermosillo - Lim. Edos. Term. Son. Ppia. Chih. (Yécora)	MEX-016
4 Janos - Agua Prieta	MEX-002
5 Magdalena de Kino - Nogales	MEX-015
6 Moctezuma - Agua Prieta	MEX-017
7 Ramal a Naco	MEX-002
8 Ramal a Puerta de México	MEX-002
9 Sonoita - Mexicali	MEX-002
10 Sonoita - Puerto Peñasco	MEX-002

## ---RED FEDERAL DE CUOTA---

11 Cd. Obregón - Guaymas (Cuota)	MEX-015D
12 Hermosillo - Magdalena de Kino (Cuota)	MEX-015D
13 Libramiento de Ciudad Obregón (Cuota)	MEX-015D
14 Libramiento de Empalme - Guaymas (Cuota)	MEX-015D
15 Libramiento de Hermosillo (Cuota)	MEX-015D
16 Libramiento de Magdalena de Kino (Cuota)	MEX-015D
17 Libramiento de Nogales (Cuota)	MEX-15D
18 Los Mochis - Cd. Obregón (Cuota)	MEX-015D

## ---RED FEDERAL INTEGRADA POR TRAMOS LIBRES Y DE CUOTA---

19 Santa Ana - Sonoita	MEX-002D-MEX
------------------------	--------------

## ---RED ESTATAL LIBRE---

20 Agua Prieta - Bavispe	SON-069
21 Altar - Sáric	SON-064
22 Caborca - El Desemboque	SON-037
23 Calle 36 Norte - Puerto de La Libertad	SON-029
24 Esperanza - Presa Álvaro Obregón	SON-117
25 Hermosillo - Bahía Kino	SON-100
26 Hermosillo - Sahuaripa	SON-020
27 Hornos - San Nicolás	SON-012
28 Huatabampo - Bacabachi	SON-176
29 La Alameda - El Sahuaro	SON-037
30 Mazocahui - Cananea	SON-118
31 Navojoa - Álamos	SON-013
32 Navojoa - Yavaros	SON-056
33 Nogales - San Antonio	SON
34 Ramal a Aeropuerto de Guaymas	SON
35 San Luis Río Colorado - Golfo de Santa Clara	SON-040
36 Sonoita - Pitiquito	SON

## ---RED ESTATAL DE CUOTA---

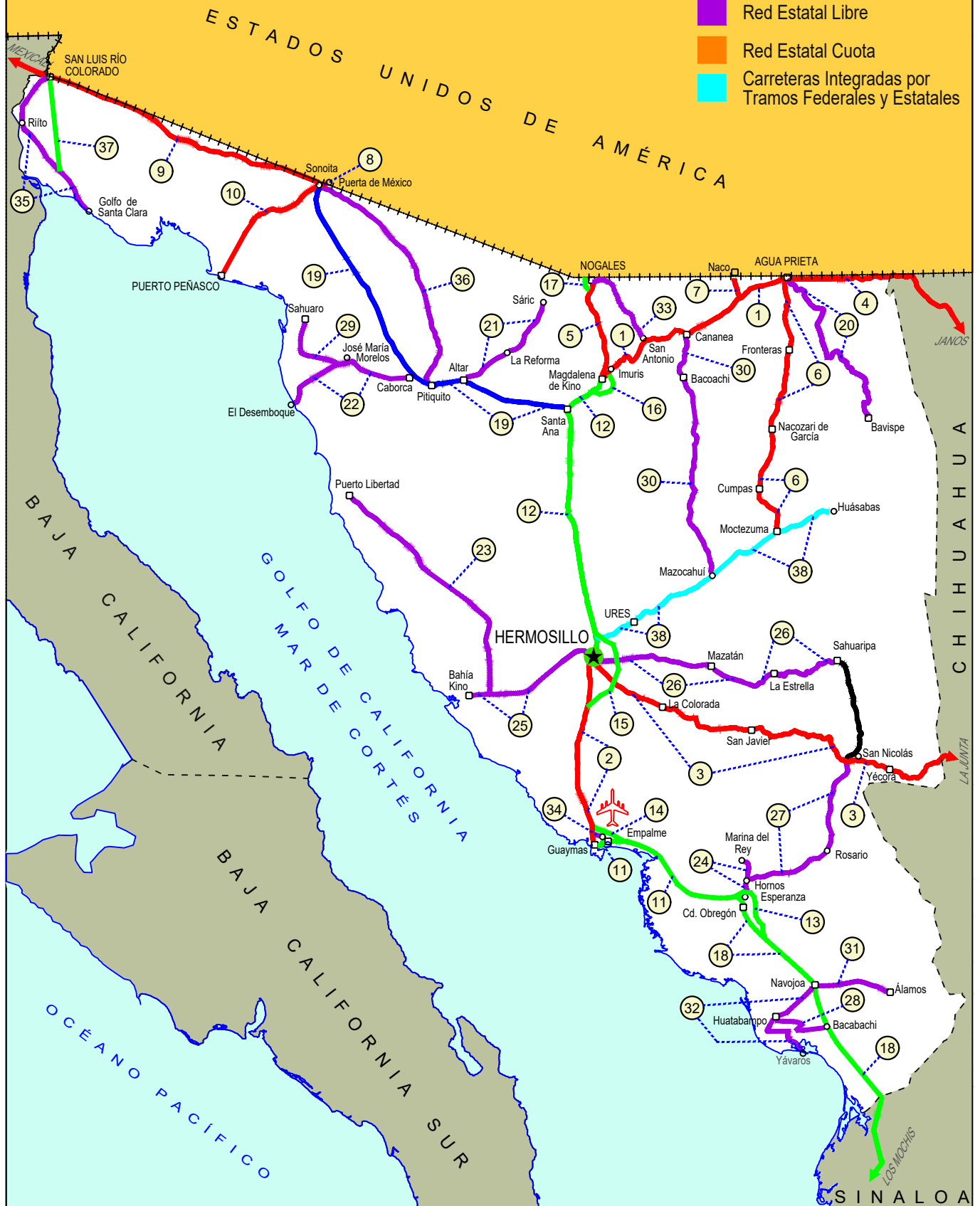
37 San Luis Río Colorado - Golfo de Santa Clara (Cuota)	SON-D
---	-------

## ---CARRETERAS INTEGRADAS POR TRAMOS FEDERALES Y ESTATALES---

38 T. C. (Hermosillo - Nogales) - Huásabas	MEX-014-SON
--	-------------

# 26 SONORA

- ① --- Número Índice
- Red Federal Libre
- Red Federal Cuota
- Red Federal Integrada por Tramos Libres y de Cuota
- Red Estatal Libre
- Red Estatal Cuota
- Carreteras Integradas por Tramos Federales y Estatales





SONORA

1 CARR: Agua Prieta - Imuris

CLAVE: 26079

RUTA: MEX-002

AÑO: 2025

LUGAR	ESTACION				CLASIFICACION VEHICULAR EN PORCIENTO										COORDENADAS					
	KM	TE	SC	TDPA	M	A	B	C2	C3	T3S2	T3S3	T3S2R4	OTROS	A	B	C	K'	D	LATITUD	LONGITUD
Agua Prieta	0.00	3	1	2773	1.6	63.7	3.3	7.1	1.1	14.4	3.1	5.0	0.7	65.3	3.3	31.4	0.071	0.546	31.309726	-109.597756
Agua Prieta	0.00	3	2	2862	1.8	64.8	2.8	7.0	1.6	13.6	2.8	4.9	0.7	66.6	2.8	30.6	0.083	0.546	31.309568	-109.597713
T. Izq. Cananea	82.00	1	1	3566	3.1	69.0	3.2	3.6	2.0	12.6	2.5	3.5	0.5	72.1	3.2	24.7	0.078	0.531	31.003281	-110.247324
T. Izq. Cananea	82.00	1	2	3469	2.9	67.6	3.3	3.6	2.5	13.1	2.6	3.9	0.5	70.5	3.3	26.2	0.071	0.531	31.002993	-110.247377
T. Izq. Cananea	82.00	3	0	4538	2.9	56.6	4.7	5.7	2.0	17.1	4.2	5.7	1.1	59.5	4.7	35.8	0.090	0.501	31.015960	-110.326428
T. Izq a Nogales	117.50																			
Imuris	162.70	1	0	4873	5.5	55.0	3.4	13.4	2.6	9.6	3.4	6.0	1.1	60.5	3.4	36.1	0.067	0.580	30.801735	-110.827594

2 CARR: Guaymas - Hermosillo

CLAVE: 26444

RUTA: MEX-015

AÑO: 2025

LUGAR	ESTACION				CLASIFICACION VEHICULAR EN PORCIENTO										COORDENADAS					
	KM	TE	SC	TDPA	M	A	B	C2	C3	T3S2	T3S3	T3S2R4	OTROS	A	B	C	K'	D	LATITUD	LONGITUD
Guaymas	123.00																			
T. Izq. San Carlos	133.00	1	1	8750	4.3	85.5	2.0	4.0	1.2	1.0	0.8	0.9	0.3	89.8	2.0	8.2	0.084	0.593	27.979980	-110.939159
T. Izq. San Carlos	133.00	1	2	8718	4.4	85.7	1.9	4.1	1.2	1.2	0.6	0.7	0.2	90.1	1.9	8.0	0.103	0.593	27.979854	-110.939296
T. Izq. San Carlos	133.00	3	1	4895	3.8	82.1	2.4	4.3	2.7	2.1	1.0	1.3	0.3	85.9	2.4	11.7	0.102	0.513	27.991686	-110.940233
T. Izq. San Carlos	133.00	3	2	4408	4.0	81.0	2.9	4.9	2.3	2.3	1.1	1.1	0.4	85.0	2.9	12.1	0.108	0.513	27.991738	-110.940383
T. Der Lib Empalme-Guaymas	139.40																			
T. Izq. Bahía Kino	171.30	1	1	7016	3.6	68.2	4.4	4.5	1.6	11.6	1.6	3.8	0.7	71.8	4.4	23.8	0.091	0.602	28.315660	-111.041734
T. Izq. Bahía Kino	171.30	1	2	7624	3.9	69.3	4.0	4.1	1.5	11.3	1.5	3.5	0.9	73.2	4.0	22.8	0.101	0.602	28.315642	-111.042076
T. Izq. Bahía Kino	171.30	3	1	6708	3.8	68.3	4.6	4.1	1.8	11.3	1.9	3.3	0.9	72.1	4.6	23.3	0.097	0.653	28.325135	-111.041916
T. Izq. Bahía Kino	171.30	3	2	7026	3.4	69.9	4.2	4.0	1.6	11.0	1.5	3.5	0.9	73.3	4.2	22.5	0.112	0.653	28.325113	-111.042271
T. Der. Libramiento de Hermosillo (Cuota)	233.80	3	1	7232	4.4	69.5	5.4	4.2	1.7	8.5	1.9	3.5	0.9	73.9	5.4	20.7	0.135	0.666	28.897674	-110.951484
T. Der. Libramiento de Hermosillo (Cuota)	233.80	3	2	6877	3.9	70.6	5.5	4.4	1.4	8.2	1.5	3.6	0.9	74.5	5.5	20.0	0.097	0.666	28.897770	-110.951849
Hermosillo	251.00	1	1	9025	3.8	74.3	3.0	6.7	1.8	5.9	0.9	2.9	0.7	78.1	3.0	18.9	0.116	0.648	29.001144	-110.968257
Hermosillo	251.00	1	2	8540	4.0	75.0	3.0	6.4	1.5	5.6	0.9	3.1	0.5	79.0	3.0	18.0	0.086	0.648	29.001220	-110.968417

3 CARR: Hermosillo - Lim. Edos. Term. Son. Ppia. Chih. (Yécora)

CLAVE: 26251

RUTA: MEX-016

AÑO: 2025

LUGAR	ESTACION				CLASIFICACION VEHICULAR EN PORCIENTO										COORDENADAS					
	KM	TE	SC	TDPA	M	A	B	C2	C3	T3S2	T3S3	T3S2R4	OTROS	A	B	C	K'	D	LATITUD	LONGITUD
T. C. Cd. Obregón - Hermosillo	0.00																			
T. Izq. Sahuaripa	4.00	3	1	1156	2.5	72.7	3.4	6.5	3.3	5.4	3.8	2.1	0.3	75.2	3.4	21.4	0.128	0.585	29.000941	-110.908140
T. Izq. Sahuaripa	4.00	3	2	1216	2.4	73.7	3.4	6.4	3.2	5.0	3.6	1.7	0.6	76.1	3.4	20.5	0.140	0.585	29.001028	-110.908051
La Colorada	47.00	3	0	888	0.9	72.2	2.5	9.2	4.7	3.4	3.6	2.8	0.7	73.1	2.5	24.4	0.104	0.543	28.813877	-110.570297

SONORA

3 CARR: Hermosillo - Lim. Edos. Term. Son. Ppia. Chih. (Yécora)

CLAVE: 26251

RUTA: MEX-016

AÑO: 2025

LUGAR	ESTACION				CLASIFICACION VEHICULAR EN PORCIENTO										COORDENADAS					
	KM	TE	SC	TDPA	M	A	B	C2	C3	T3S2	T3S3	T3S2R4	OTROS	A	B	C	K'	D	LATITUD	LONGITUD
Tecoripa	138.00	3	0	625	6.4	72.5	1.5	6.2	5.5	4.5	3.0	0.4	0.0	78.9	1.5	19.6	0.115	0.569	28.622210	-109.950049
Yécora	280.00	3	0	424	9.4	65.1	3.4	13.9	2.9	3.3	1.4	0.5	0.1	74.5	3.4	22.1	0.113	0.563	28.367230	-108.921206
Lim. Edos. Term. Chih. Ppia. Son.	349.00																			

4 CARR: Janos - Agua Prieta

CLAVE: 00220

RUTA: MEX-002

AÑO: 2025

LUGAR	ESTACION				CLASIFICACION VEHICULAR EN PORCIENTO										COORDENADAS					
	KM	TE	SC	TDPA	M	A	B	C2	C3	T3S2	T3S3	T3S2R4	OTROS	A	B	C	K'	D	LATITUD	LONGITUD
T. C. Cd. Juárez - Janos	0.00	3	0	4462	5.8	57.4	3.4	8.9	2.2	12.7	3.1	5.6	0.9	63.2	3.4	33.4	0.076	0.540	30.889817	-108.211912
Los Mimbres	56.00	3	0	3669	2.9	53.5	5.7	7.4	3.2	13.8	3.3	9.5	0.7	56.4	5.7	37.9	0.067	0.500	31.244869	-108.581376
Lim. Edos. Term. Chih. Ppia. Son.	78.00																			
Rancho Guadalupe	116.00																			
Agua Prieta	160.00	1	0	2907	6.5	47.2	5.7	6.9	2.0	19.2	4.2	7.5	0.8	53.7	5.7	40.6	0.090	0.508	31.322988	-109.506579

5 CARR: Magdalena de Kino - Nogales

CLAVE: 26444

RUTA: MEX-015

AÑO: 2025

LUGAR	ESTACION				CLASIFICACION VEHICULAR EN PORCIENTO										COORDENADAS					
	KM	TE	SC	TDPA	M	A	B	C2	C3	T3S2	T3S3	T3S2R4	OTROS	A	B	C	K'	D	LATITUD	LONGITUD
Magdalena de Kino	181.30	3	1	4861	1.7	87.4	2.2	4.0	1.0	1.2	1.0	1.0	0.5	89.1	2.2	8.7	0.099	0.554	30.650961	-110.942266
Magdalena de Kino	181.30	3	2	5135	1.7	88.5	2.2	3.5	0.7	1.0	0.8	1.1	0.5	90.2	2.2	7.6	0.087	0.554	30.651060	-110.942213
T. Lib de Magdalena	188.40																			
Imuris	209.00	1	1	6825	3.0	77.6	3.8	3.9	1.1	8.1	1.0	1.0	0.5	80.6	3.8	15.6	0.093	0.515	30.755988	-110.853713
Imuris	209.00	1	2	6873	3.0	76.8	3.2	4.3	1.0	8.8	1.3	1.0	0.6	79.8	3.2	17.0	0.108	0.515	30.756078	-110.853862
T. Der. Agua Prieta	209.50	3	1	5817	1.9	79.7	2.6	6.4	1.5	4.8	1.0	1.5	0.6	81.6	2.6	15.8	0.115	0.559	30.792249	-110.850594
T. Der. Agua Prieta	209.50	3	2	6054	1.4	80.9	2.4	5.9	1.2	5.3	1.3	1.2	0.4	82.3	2.4	15.3	0.093	0.559	30.792259	-110.850689
T. Izq. Sáric	255.90	1	1	11970	1.3	85.2	2.2	4.2	2.0	3.4	0.5	0.8	0.4	86.5	2.2	11.3	0.066	0.568	31.177011	-110.968374
T. Izq. Sáric	255.90	1	2	12542	1.2	84.9	2.4	4.4	2.2	3.4	0.5	0.7	0.3	86.1	2.4	11.5	0.080	0.568	31.176937	-110.968454
T. Izq. Sáric	255.90	3	1	13270	1.4	84.4	2.8	4.8	2.1	3.2	0.4	0.7	0.2	85.8	2.8	11.4	0.073	0.553	31.194201	-110.973144
T. Izq. Sáric	255.90	3	2	12871	1.3	84.4	2.8	4.7	2.1	3.3	0.4	0.8	0.2	85.7	2.8	11.5	0.077	0.553	31.194176	-110.973246
T. Izq. Libramiento de Nogales (Cuota)	261.00	3	1	20248	1.1	89.6	1.7	4.2	1.5	1.4	0.2	0.2	0.1	90.7	1.7	7.6	0.079	0.525	31.249071	-110.956571
T. Izq. Libramiento de Nogales (Cuota)	261.00	3	2	20850	1.1	89.2	1.9	4.4	1.4	1.6	0.2	0.1	0.1	90.3	1.9	7.8	0.083	0.525	31.249286	-110.956572
T. Izq. Periférico Luis Donaldo Colosio	267.00	1	1	28239	1.6	87.9	1.8	6.1	0.7	0.9	0.2	0.4	0.4	89.5	1.8	8.7	0.078	0.508	31.275521	-110.941462
T. Izq. Periférico Luis Donaldo Colosio	267.00	1	2	27320	1.6	88.1	1.7	6.3	0.5	1.0	0.1	0.5	0.2	89.7	1.7	8.6	0.072	0.508	31.275543	-110.941615
Nogales	272.70	1	1	18595	1.2	92.6	1.1	3.5	0.5	0.3	0.3	0.3	0.2	93.8	1.1	5.1	0.089	0.576	31.291028	-110.936635
Nogales	272.70	1	2	17296	1.1	90.8	1.7	4.4	0.7	0.3	0.4	0.4	0.2	91.9	1.7	6.4	0.073	0.576	31.290960	-110.936755

SONORA

6 CARR: Moctezuma - Agua Prieta

CLAVE: 26027

RUTA: MEX-017

AÑO: 2025

LUGAR	ESTACION				CLASIFICACION VEHICULAR EN PORCIENTO										COORDENADAS					
	KM	TE	SC	TDPA	M	A	B	C2	C3	T3S2	T3S3	T3S2R4	OTROS	A	B	C	K'	D	LATITUD	LONGITUD
Moctezuma	0.00	3	0	1479	0.8	88.7	1.0	3.7	1.4	1.7	0.9	1.1	0.7	89.5	1.0	9.5	0.091	0.634	29.827953	-109.675125
Nacozeni de García	81.00	3	0	2021	1.2	84.2	2.1	6.8	2.1	1.8	0.6	1.0	0.2	85.4	2.1	12.5	0.081	0.595	30.387577	-109.693376
Turicachi	111.00	1	0	1688	0.8	81.9	1.5	7.2	1.5	2.1	1.9	2.5	0.6	82.7	1.5	15.8	0.105	0.921	30.653479	-109.596077
T. C. Agua Prieta - Imuris	197.60	1	0	5801	3.1	87.0	1.6	3.0	1.5	1.4	1.0	0.9	0.5	90.1	1.6	8.3	0.086	0.573	31.307561	-109.582004

7 CARR: Ramal a Naco

CLAVE: 26579

RUTA: MEX-002

AÑO: 2025

LUGAR	ESTACION				CLASIFICACION VEHICULAR EN PORCIENTO										COORDENADAS					
	KM	TE	SC	TDPA	M	A	B	C2	C3	T3S2	T3S3	T3S2R4	OTROS	A	B	C	K'	D	LATITUD	LONGITUD
T. C. Agua Prieta - Imuris	0.00	3	0	1784	1.3	92.1	1.4	2.4	1.3	1.3	0.1	0.1	0.0	93.4	1.4	5.2	0.105	0.519	31.210856	-109.909355
Naco	14.00																			

8 CARR: Ramal a Puerta de México

CLAVE: 26577

RUTA: MEX-002

AÑO: 2025

LUGAR	ESTACION				CLASIFICACION VEHICULAR EN PORCIENTO										COORDENADAS					
	KM	TE	SC	TDPA	M	A	B	C2	C3	T3S2	T3S3	T3S2R4	OTROS	A	B	C	K'	D	LATITUD	LONGITUD
T. C. Sonoita - Mexicali	0.00	3	0	11679	4.5	90.0	0.6	2.8	1.0	0.4	0.4	0.2	0.1	94.5	0.6	4.9	0.079	0.573	31.867204	-112.842304
Frontera E.U.A	3.30																			

9 CARR: Sonoita - Mexicali

CLAVE: 00081

RUTA: MEX-002

AÑO: 2025

LUGAR	ESTACION				CLASIFICACION VEHICULAR EN PORCIENTO										COORDENADAS					
	KM	TE	SC	TDPA	M	A	B	C2	C3	T3S2	T3S3	T3S2R4	OTROS	A	B	C	K'	D	LATITUD	LONGITUD
Sonoita	0.00	3	0	5511	3.9	47.4	7.0	3.7	2.2	23.8	3.2	8.0	0.8	51.3	7.0	41.7	0.053	0.519	31.886709	-112.858500
Los Vidrios	58.75	3	0	4414	3.2	34.7	11.5	3.5	2.2	31.8	3.0	9.0	1.1	37.9	11.5	50.6	0.050	0.514	32.028723	-113.426808
San Luis Río Colorado	191.80	1	0	5747	3.5	50.9	7.4	3.3	2.2	22.5	2.6	6.9	0.7	54.4	7.4	38.2	0.051	0.512	32.451085	-114.675245
San Luis Río Colorado	191.80	3	1	10338	1.2	82.7	2.3	3.2	1.5	6.5	0.6	1.6	0.4	83.9	2.3	13.8	0.079	0.531	32.486961	-114.792706
San Luis Río Colorado	191.80	3	2	11295	1.3	82.7	2.4	3.1	1.5	6.4	0.5	1.7	0.4	84.0	2.4	13.6	0.076	0.531	32.486854	-114.792760
Lim. Edos. Term. Son. Ppia. B.C.	203.69																			
X. C. Mexicali - Algodones	206.78	1	1	11924	2.7	78.5	3.0	4.2	0.8	6.8	0.9	2.5	0.6	81.2	3.0	15.8	0.067	0.529	32.497872	-114.829179
X. C. Mexicali - Algodones	206.78	1	2	12410	2.6	78.8	2.9	4.4	0.8	6.7	0.9	2.5	0.4	81.4	2.9	15.7	0.071	0.529	32.497658	-114.828779
X. C. Mexicali - Algodones	206.78	3	1	10946	2.9	76.7	2.7	4.5	1.3	7.8	0.8	2.6	0.7	79.6	2.7	17.7	0.075	0.539	32.510437	-114.871176
X. C. Mexicali - Algodones	206.78	3	2	12018	3.0	76.6	2.6	4.6	1.2	8.0	0.9	2.3	0.8	79.6	2.6	17.8	0.061	0.539	32.510364	-114.871226
T. Izq. Ejido Hermosillo	214.80	3	1	7773	3.4	73.2	3.4	5.6	1.2	8.7	1.0	2.9	0.6	76.6	3.4	20.0	0.099	0.603	32.527433	-114.928442
T. Izq. Ejido Hermosillo	214.80	3	2	7849	3.3	72.8	3.5	5.5	1.4	8.6	1.3	3.1	0.5	76.1	3.5	20.4	0.085	0.603	32.527342	-114.928482

SONORA

9 CARR: Sonoita - Mexicali

CLAVE: 00081

RUTA: MEX-002

AÑO: 2025

LUGAR	ESTACION				CLASIFICACION VEHICULAR EN PORCIENTO										COORDENADAS					
	KM	TE	SC	TDPA	M	A	B	C2	C3	T3S2	T3S3	T3S2R4	OTROS	A	B	C	K'	D	LATITUD	LONGITUD
T. Izq. Ejido Tehuantepec	223.83	3	1	14811	2.1	79.5	3.2	3.3	1.4	6.9	1.1	1.9	0.6	81.6	3.2	15.2	0.072	0.511	32.554912	-115.034419
T. Izq. Ejido Tehuantepec	223.83	3	2	13498	2.0	80.3	3.1	3.2	1.2	6.8	1.0	1.8	0.6	82.3	3.1	14.6	0.079	0.511	32.554821	-115.034402
Ejido Monterrey	228.63	3	1	13392	2.2	75.1	3.3	6.2	1.2	8.1	1.0	2.3	0.6	77.3	3.3	19.4	0.063	0.513	32.551989	-115.087469
Ejido Monterrey	228.63	3	2	13001	2.1	75.9	3.2	6.1	1.1	8.0	0.9	2.2	0.5	78.0	3.2	18.8	0.069	0.513	32.551902	-115.087487
X. C. Mexicali - Estación Coahuila	242.17	1	1	12770	2.2	80.9	2.4	3.2	1.7	5.8	1.0	2.3	0.5	83.1	2.4	14.5	0.065	0.537	32.552835	-115.203071
X. C. Mexicali - Estación Coahuila	242.17	1	2	12632	1.9	81.8	2.3	3.3	1.6	5.5	0.9	2.1	0.6	83.7	2.3	14.0	0.071	0.537	32.552741	-115.203075
T. Izq. Libramiento de Mexicali (Cuota)	249.32	1	1	14380	1.4	81.6	2.6	4.1	1.0	6.5	0.8	1.5	0.5	83.0	2.6	14.4	0.066	0.561	32.554974	-115.286228
T. Izq. Libramiento de Mexicali (Cuota)	249.32	1	2	14960	1.2	81.0	2.6	4.3	1.3	6.3	1.0	1.7	0.6	82.2	2.6	15.2	0.069	0.561	32.554876	-115.286264
X. C. Mexicali - Algodones	256.47	1	1	15017	1.8	87.3	1.9	3.5	1.0	2.2	0.5	1.3	0.5	89.1	1.9	9.0	0.064	0.517	32.565178	-115.325704
X. C. Mexicali - Algodones	256.47	1	2	15118	1.7	88.3	1.6	3.7	1.2	1.8	0.3	1.0	0.4	90.0	1.6	8.4	0.064	0.517	32.565050	-115.325759
T. C. Mexicali - San Felipe	265.12																			

10 CARR: Sonoita - Puerto Peñasco

CLAVE: 26232

RUTA: MEX-002

AÑO: 2025

LUGAR	ESTACION				CLASIFICACION VEHICULAR EN PORCIENTO										COORDENADAS						
	KM	TE	SC	TDPA	M	A	B	C2	C3	T3S2	T3S3	T3S2R4	OTROS	A	B	C	K'	D	LATITUD	LONGITUD	
Sonoita	0.00	3	0	2276	6.1	74.4	1.4	13.7	1.2	1.7	0.6	0.8	0.1	80.5	1.4	18.1	0.097	0.534	31.862245	-112.877797	
Puerto Peñasco	100.40																				

11 CARR: Cd. Obregón - Guaymas (Cuota)

CLAVE: 26444

RUTA: MEX-015D

AÑO: 2025

LUGAR	ESTACION				CLASIFICACION VEHICULAR EN PORCIENTO										COORDENADAS						
	KM	TE	SC	TDPA	M	A	B	C2	C3	T3S2	T3S3	T3S2R4	OTROS	A	B	C	K'	D	LATITUD	LONGITUD	
Cd. Obregón	0.00																				
Esperanza	7.96	1	1	11564	6.2	75.6	3.9	7.9	1.5	2.8	1.0	0.9	0.2	81.8	3.9	14.3	0.087	0.696	27.558761	-109.927166	
Esperanza	7.96	1	2	12610	5.8	75.0	4.7	8.3	1.6	2.5	0.9	1.0	0.2	80.8	4.7	14.5	0.096	0.696	27.558761	-109.927276	
Esperanza	7.96	3	1	3410	6.6	63.5	10.5	5.9	1.8	8.1	1.6	1.6	0.4	70.1	10.5	19.4	0.078	0.503	27.597901	-109.932978	
Esperanza	7.96	3	2	3603	6.4	64.3	11.0	5.8	1.6	7.5	1.4	1.6	0.4	70.7	11.0	18.3	0.073	0.503	27.597819	-109.933087	
Plaza de Cobro Esperanza	10.70	2	1	1898	0.2	63.0	9.0	3.2	2.1	14.9	1.8	4.5	1.3	63.2	9.0	27.8	0.086	0.500	27.603754	-109.939057	
Plaza de Cobro Esperanza	10.70	2	2	1898	0.2	63.0	9.0	3.2	2.1	14.9	1.8	4.5	1.3	63.2	9.0	27.8	0.086	0.500	27.603754	-109.939057	
T. Der. Estación Corral	13.80	1	1	4816	4.2	60.6	8.8	4.2	2.1	12.6	1.9	4.7	0.9	64.8	8.8	26.4	0.071	0.515	27.611358	-109.946770	
T. Der. Estación Corral	13.80	1	2	5200	4.5	60.3	8.4	4.2	2.0	12.6	1.9	5.1	1.0	64.8	8.4	26.8	0.068	0.515	27.611262	-109.946881	
T. Der. Estación Corral	13.80	3	1	4967	6.8	55.2	6.5	6.7	2.3	14.6	2.0	5.0	0.9	62.0	6.5	31.5	0.065	0.541	27.618618	-109.963206	
T. Der. Estación Corral	13.80	3	2	5019	5.8	56.6	6.4	6.8	2.0	14.6	2.1	4.8	0.9	62.4	6.4	31.2	0.076	0.541	27.618392	-109.963112	
T. Izq. BÁCUM	25.46	1	1	4544	5.9	55.3	8.0	5.9	2.8	15.1	1.9	4.2	0.9	61.2	8.0	30.8	0.066	0.513	27.599758	-110.072140	

SONORA

11 CARR: Cd. Obregón - Guaymas (Cuota)

CLAVE: 26444

RUTA: MEX-015D

AÑO: 2025

LUGAR	ESTACION				CLASIFICACION VEHICULAR EN PORCIENTO										COORDENADAS					
	KM	TE	SC	TDPA	M	A	B	C2	C3	T3S2	T3S3	T3S2R4	OTROS	A	B	C	K'	D	LATITUD	LONGITUD
T. Izq. Bácum	25.46	1	2	4886	6.2	55.5	8.2	5.5	2.5	15.2	2.0	4.0	0.9	61.7	8.2	30.1	0.069	0.513	27.599619	-110.072098
T. Izq. Bácum	25.46	3	1	6220	4.6	61.0	7.8	5.0	1.6	13.4	1.9	4.0	0.7	65.6	7.8	26.6	0.077	0.571	27.598340	-110.092566
T. Izq. Bácum	25.46	3	2	7017	4.8	60.5	8.0	5.4	1.8	13.2	1.7	3.9	0.7	65.3	8.0	26.7	0.084	0.571	27.598152	-110.092608
Vícam	47.28	3	1	6761	5.7	61.3	6.8	6.0	1.8	10.8	1.8	4.9	0.9	67.0	6.8	26.2	0.079	0.598	27.647699	-110.306302
Vícam	47.28	3	2	7693	5.9	61.2	6.7	5.8	1.9	10.6	1.8	5.2	0.9	67.1	6.7	26.2	0.103	0.598	27.647591	-110.306385
T. Izq. Pótam	57.40	1	1	6203	4.0	63.0	6.3	6.7	2.0	11.6	2.1	3.5	0.8	67.0	6.3	26.7	0.072	0.545	27.687945	-110.359528
T. Izq. Pótam	57.40	1	2	6217	4.2	63.7	6.1	6.5	1.8	11.6	1.9	3.4	0.8	67.9	6.1	26.0	0.080	0.545	27.687780	-110.359602
T. Izq. Pótam	57.40	3	1	6635	4.4	63.7	6.4	6.2	1.1	12.1	1.9	3.4	0.8	68.1	6.4	25.5	0.077	0.501	27.704948	-110.371200
T. Izq. Pótam	57.40	3	2	6179	4.2	62.1	6.2	6.5	1.8	12.6	2.2	3.6	0.8	66.3	6.2	27.5	0.085	0.501	27.704866	-110.371348
T. Der. Libramiento de Guaymas	107.70	1	1	7670	3.4	66.5	6.5	4.7	1.0	12.9	1.6	2.5	0.9	69.9	6.5	23.6	0.074	0.541	27.951262	-110.728920
T. Der. Libramiento de Guaymas	107.70	1	2	7561	3.5	67.1	6.3	4.4	1.2	12.4	1.9	2.4	0.8	70.6	6.3	23.1	0.068	0.541	27.950957	-110.728922
T. Der. Libramiento de Guaymas	107.70	3	0	6377	3.8	81.2	4.4	5.9	1.1	2.0	1.0	0.5	0.1	85.0	4.4	10.6	0.088	0.555	27.952289	-110.765269
Empalme	115.02	1	0	7044	3.8	85.7	2.4	3.7	1.0	1.5	0.8	0.9	0.2	89.5	2.4	8.1	0.074	0.552	27.952274	-110.810121
Empalme	115.02	3	1	9651	5.8	87.3	2.2	2.6	0.6	0.8	0.3	0.3	0.1	93.1	2.2	4.7	0.083	0.544	27.954656	-110.840156
Empalme	115.02	3	2	9689	5.4	87.5	2.1	2.9	0.7	0.6	0.3	0.4	0.1	92.9	2.1	5.0	0.069	0.544	27.954570	-110.840153
Guaymas	123.00																			

12 CARR: Hermosillo - Magdalena de Kino (Cuota)

CLAVE: 26444

RUTA: MEX-015D

AÑO: 2025

LUGAR	ESTACION				CLASIFICACION VEHICULAR EN PORCIENTO										COORDENADAS					
	KM	TE	SC	TDPA	M	A	B	C2	C3	T3S2	T3S3	T3S2R4	OTROS	A	B	C	K'	D	LATITUD	LONGITUD
Hermosillo	0.00	3	1	13039	1.4	85.5	2.2	5.5	1.5	2.9	0.3	0.6	0.1	86.9	2.2	10.9	0.069	0.588	29.115672	-110.912225
Hermosillo	0.00	3	2	15066	1.3	85.5	2.2	5.6	1.4	2.9	0.2	0.6	0.3	86.8	2.2	11.0	0.080	0.588	29.115624	-110.912430
T. Der. Ures	8.60	1	1	11066	1.6	84.7	2.4	5.2	1.4	2.6	0.5	1.3	0.3	86.3	2.4	11.3	0.083	0.554	29.156785	-110.909520
T. Der. Ures	8.60	1	2	11022	1.6	85.7	1.9	4.4	1.4	2.8	0.6	1.2	0.4	87.3	1.9	10.8	0.077	0.554	29.156802	-110.909708
T. Der. Ures	8.60	3	1	8941	1.5	83.7	2.9	5.2	1.0	3.6	0.8	1.0	0.3	85.2	2.9	11.9	0.120	0.515	29.171160	-110.914089
T. Der. Ures	8.60	3	2	8580	1.6	83.7	2.8	5.1	1.0	3.8	0.8	0.9	0.3	85.3	2.8	11.9	0.096	0.515	29.171080	-110.914208
T. C. Libramiento de Hermosillo (Cuota)	11.60																			
Plaza de Cobro Hermosillo	15.20	2	1	6287	0.2	67.4	3.5	2.6	1.4	15.6	1.7	6.1	1.5	67.6	3.5	28.9	0.086	0.500	29.220685	-110.930258
Plaza de Cobro Hermosillo	15.20	2	2	6287	0.2	67.4	3.5	2.6	1.4	15.6	1.7	6.1	1.5	67.6	3.5	28.9	0.086	0.500	29.220685	-110.930258
T. Der. Pesqueira	32.39	3	1	6767	2.2	66.8	5.1	5.0	1.7	12.4	1.9	4.0	0.9	69.0	5.1	25.9	0.087	0.569	29.383454	-110.975360
T. Der. Pesqueira	32.39	3	2	6311	2.2	66.1	5.2	5.6	1.8	12.1	2.5	3.5	1.0	68.3	5.2	26.5	0.074	0.569	29.383380	-110.975633
T. Der. Carbó	68.90	1	1	6164	2.1	66.8	6.0	3.4	1.6	13.5	1.8	4.0	0.8	68.9	6.0	25.1	0.082	0.578	29.683320	-111.042194
T. Der. Carbó	68.90	1	2	6230	2.5	66.5	6.0	3.4	1.9	13.0	2.3	3.5	0.9	69.0	6.0	25.0	0.095	0.578	29.683268	-111.042564
T. Der. Carbó	68.90	3	1	6530	2.4	66.6	6.1	3.3	1.6	13.2	2.0	3.9	0.9	69.0	6.1	24.9	0.077	0.587	29.692237	-111.044165

SONORA

12 CARR: Hermosillo - Magdalena de Kino (Cuota)

CLAVE: 26444

RUTA: MEX-015D

AÑO: 2025

LUGAR	ESTACION				CLASIFICACION VEHICULAR EN PORCIENTO										COORDENADAS					
	KM	TE	SC	TDPA	M	A	B	C2	C3	T3S2	T3S3	T3S2R4	OTROS	A	B	C	K'	D	LATITUD	LONGITUD
T. Der. Carbó	68.90	3	2	6609	2.3	66.0	6.0	3.4	1.8	13.2	2.5	3.8	1.0	68.3	6.0	25.7	0.088	0.587	29.692182	-111.044526
T. Izq. Benjamín Hill	125.40	1	1	6540	2.8	63.4	6.3	6.8	1.5	13.0	1.6	3.8	0.8	66.2	6.3	27.5	0.093	0.546	30.160800	-111.097148
T. Izq. Benjamín Hill	125.40	1	2	6606	2.9	62.5	6.6	7.1	1.6	13.3	1.8	3.4	0.8	65.4	6.6	28.0	0.088	0.546	30.160813	-111.097469
T. Izq. Benjamín Hill	125.40	3	1	6392	2.3	64.9	6.4	5.5	1.7	13.0	1.7	3.6	0.9	67.2	6.4	26.4	0.067	0.584	30.179017	-111.097249
T. Izq. Benjamín Hill	125.40	3	2	6617	2.2	64.0	6.3	5.9	1.8	13.6	1.6	3.7	0.9	66.2	6.3	27.5	0.081	0.584	30.179022	-111.097572
Santa Ana	167.27	1	1	7301	2.3	69.0	3.3	5.8	2.0	11.7	1.1	4.0	0.8	71.3	3.3	25.4	0.081	0.570	30.517884	-111.107863
Santa Ana	167.27	1	2	6856	2.6	69.5	3.1	5.4	1.4	11.6	1.4	4.1	0.9	72.1	3.1	24.8	0.062	0.570	30.513348	-111.106944
Santa Ana	167.27	3	1	7401	3.9	70.4	3.6	5.7	1.4	9.8	1.7	2.7	0.8	74.3	3.6	22.1	0.079	0.531	30.567708	-111.087737
Santa Ana	167.27	3	2	6631	3.9	70.1	3.4	5.8	1.3	10.0	1.6	3.1	0.8	74.0	3.4	22.6	0.090	0.531	30.567834	-111.087909
T. Lib de Magdalena	178.00																			
Magdalena de Kino	181.30	1	1	2849	3.4	85.2	2.2	5.0	2.0	1.2	0.3	0.4	0.3	88.6	2.2	9.2	0.088	0.529	30.621475	-110.981590
Magdalena de Kino	181.30	1	2	2670	3.5	84.5	2.3	4.9	2.8	1.0	0.3	0.4	0.3	88.0	2.3	9.7	0.093	0.529	30.621740	-110.981673

13 CARR: Libramiento de Ciudad Obregón (Cuota)

CLAVE:

RUTA: MEX-015D

AÑO: 2025

LUGAR	ESTACION				CLASIFICACION VEHICULAR EN PORCIENTO										COORDENADAS					
	KM	TE	SC	TDPA	M	A	B	C2	C3	T3S2	T3S3	T3S2R4	OTROS	A	B	C	K'	D	LATITUD	LONGITUD
T. C. Los Mochis - Cd. Obregón (Cuota)	0.00																			
Plaza de Cobro Esperanza-Hornos	31.00	2	0	3308	0.2	38.6	2.0	3.3	3.0	35.6	3.1	11.5	2.7	38.8	2.0	59.2	0.090	0.500	27.604518	-109.898767
X. C. Esperanza - Presa Álvaro Obregón	31.40	1	0	3710	3.0	48.6	5.1	3.6	2.0	28.1	2.2	6.4	1.0	51.6	5.1	43.3	0.063	0.502	27.598840	-109.883437
X. C. Esperanza - Presa Álvaro Obregón	31.40	3	0	3828	2.5	48.7	5.5	2.9	1.9	28.4	2.2	6.9	1.0	51.2	5.5	43.3	0.060	0.522	27.606169	-109.909331
T. C. Cd. Obregón - Guaymas (Cuota)	35.00																			

14 CARR: Libramiento de Empalme - Guaymas (Cuota)

CLAVE: 26256

RUTA: MEX-015D

AÑO: 2025

LUGAR	ESTACION				CLASIFICACION VEHICULAR EN PORCIENTO										COORDENADAS					
	KM	TE	SC	TDPA	M	A	B	C2	C3	T3S2	T3S3	T3S2R4	OTROS	A	B	C	K'	D	LATITUD	LONGITUD
T. C. Cd. Obregón - Hermosillo (Sur)	0.00	3	1	4249	4.1	58.5	6.3	3.5	2.9	17.6	2.0	4.2	0.9	62.6	6.3	31.1	0.071	0.540	27.955969	-110.752729
T. C. Cd. Obregón - Hermosillo (Sur)	0.00	3	2	4346	3.7	58.4	6.5	3.6	2.9	18.0	2.1	4.0	0.8	62.1	6.5	31.4	0.081	0.540	27.955651	-110.752752
T. C. Cd. Obregón - Hermosillo (Norte)	21.50	1	1	5060	3.3	61.3	6.4	5.0	2.0	14.3	1.9	4.9	0.9	64.6	6.4	29.0	0.066	0.533	28.035492	-110.918331
T. C. Cd. Obregón - Hermosillo (Norte)	21.50	1	2	4558	3.0	61.1	6.2	5.2	2.0	14.3	2.2	5.0	1.0	64.1	6.2	29.7	0.079	0.533	28.035277	-110.918125

SONORA

15 CARR: Libramiento de Hermosillo (Cuota)

CLAVE:

RUTA: MEX-015D

AÑO: 2025

LUGAR	ESTACION				CLASIFICACION VEHICULAR EN PORCIENTO													COORDENADAS		
	KM	TE	SC	TDPA	M	A	B	C2	C3	T3S2	T3S3	T3S2R4	OTROS	A	B	C	K'	D	LATITUD	LONGITUD
T. C. Guaymas - Hermosillo	0.00	3	0	3649	3.4	50.4	5.3	3.5	2.9	22.3	3.6	7.7	0.9	53.8	5.3	40.9	0.081	0.514	28.901879	-110.946939
X. C. Hermosillo - Sahuaripa	20.00	1	0	4085	3.2	56.7	4.9	4.0	2.0	18.9	2.6	6.8	0.9	59.9	4.9	35.2	0.090	0.555	29.021538	-110.854009
X. C. Hermosillo - Sahuaripa	20.00	3	0	4482	3.0	54.0	4.6	4.2	2.1	20.8	2.9	7.4	1.0	57.0	4.6	38.4	0.078	0.621	29.040538	-110.854562
Hermosillo - Magdalena de Kino (Cuota)	40.00	1	0	4172	2.7	50.5	5.2	4.9	2.3	22.7	3.1	7.5	1.1	53.2	5.2	41.6	0.084	0.519	29.177603	-110.912194

16 CARR: Libramiento de Magdalena de Kino (Cuota)

CLAVE:

RUTA: MEX-015D

AÑO: 2025

LUGAR	ESTACION				CLASIFICACION VEHICULAR EN PORCIENTO													COORDENADAS		
	KM	TE	SC	TDPA	M	A	B	C2	C3	T3S2	T3S3	T3S2R4	OTROS	A	B	C	K'	D	LATITUD	LONGITUD
T. C. Hermosillo - Nogales (Sur)	181.30	3	1	4788	2.2	67.4	3.5	5.1	1.7	13.0	1.7	4.4	1.0	69.6	3.5	26.9	0.086	0.639	30.619217	-110.986723
T. C. Hermosillo - Nogales (Sur)	181.30	3	2	5156	2.4	67.3	3.0	5.4	1.5	13.2	1.9	4.3	1.0	69.7	3.0	27.3	0.105	0.639	30.619292	-110.986688
T. C. Hermosillo - Nogales (Norte)	193.00	1	1	5494	2.0	70.6	3.4	4.4	1.9	10.6	1.7	4.4	1.0	72.6	3.4	24.0	0.104	0.525	30.663157	-110.922499
T. C. Hermosillo - Nogales (Norte)	193.00	1	2	5481	2.2	71.0	3.4	4.4	1.6	10.2	1.7	4.6	0.9	73.2	3.4	23.4	0.099	0.525	30.663660	-110.922055

17 CARR: Libramiento de Nogales (Cuota)

CLAVE: 26100

RUTA: MEX-15D

AÑO: 2025

LUGAR	ESTACION				CLASIFICACION VEHICULAR EN PORCIENTO													COORDENADAS		
	KM	TE	SC	TDPA	M	A	B	C2	C3	T3S2	T3S3	T3S2R4	OTROS	A	B	C	K'	D	LATITUD	LONGITUD
T. C. Hermosillo - Nogales	0.00	3	1	3361	2.3	71.7	3.3	4.6	3.2	12.9	0.4	1.3	0.3	74.0	3.3	22.7	0.103	0.506	31.235713	-110.968689
T. C. Hermosillo - Nogales	0.00	3	2	3109	2.2	71.9	3.2	4.4	3.3	12.9	0.4	1.4	0.3	74.1	3.2	22.7	0.106	0.506	31.235664	-110.968802
Plaza de Cobro Nogales	4.50	2	1	2389	0.1	59.2	0.4	2.4	4.6	33.2	0.0	0.0	0.1	59.3	0.4	40.3	0.184	0.500	31.247675	-110.972370
Plaza de Cobro Nogales	4.50	2	2	2389	0.1	59.2	0.4	2.4	4.6	33.2	0.0	0.0	0.1	59.3	0.4	40.3	0.184	0.500	31.247675	-110.972370
Frontera E.U.A.	12.50	1	1	2166	2.5	61.8	2.6	7.1	4.0	19.5	1.1	1.1	0.3	64.3	2.6	33.1	0.127	0.521	31.285424	-110.979587
Frontera E.U.A.	12.50	1	2	2328	2.5	62.0	2.6	7.2	3.8	19.5	1.1	1.0	0.3	64.5	2.6	32.9	0.121	0.521	31.285408	-110.979749

18 CARR: Los Mochis - Cd. Obregón (Cuota)

CLAVE: 26444

RUTA: MEX-015D

AÑO: 2025

LUGAR	ESTACION				CLASIFICACION VEHICULAR EN PORCIENTO													COORDENADAS		
	KM	TE	SC	TDPA	M	A	B	C2	C3	T3S2	T3S3	T3S2R4	OTROS	A	B	C	K'	D	LATITUD	LONGITUD
T. C. Topolobampo - Choix	0.00	3	1	8245	9.4	66.6	4.0	4.1	2.8	9.0	1.4	2.2	0.5	76.0	4.0	20.0	0.092	0.592	25.836081	-108.975288
T. C. Topolobampo - Choix	0.00	3	2	9561	9.2	67.0	4.2	3.9	2.8	8.9	1.3	2.2	0.5	76.2	4.2	19.6	0.095	0.592	25.835983	-108.975459
T. Izq. Ahome	17.13	3	1	10198	10.5	63.3	4.5	4.0	3.2	9.2	1.8	2.8	0.7	73.8	4.5	21.7	0.074	0.524	25.945693	-109.053355
T. Izq. Ahome	17.13	3	2	9303	10.4	63.6	4.3	3.8	3.0	9.4	2.0	2.8	0.7	74.0	4.3	21.7	0.071	0.524	25.945664	-109.053483
T. Izq. Coahuilampo	19.00	1	1	8188	6.9	64.9	5.1	5.4	2.3	10.3	1.8	2.5	0.8	71.8	5.1	23.1	0.078	0.528	25.959339	-109.053271
T. Izq. Coahuilampo	19.00	1	2	8390	6.7	64.3	4.4	5.4	3.1	11.3	1.7	2.3	0.8	71.0	4.4	24.6	0.072	0.528	25.958483	-109.053645

SONORA

18 CARR: Los Mochis - Cd. Obregón (Cuota)

CLAVE: 26444

RUTA: MEX-015D

AÑO: 2025

LUGAR	ESTACION				CLASIFICACION VEHICULAR EN PORCIENTO										COORDENADAS					
	KM	TE	SC	TDPA	M	A	B	C2	C3	T3S2	T3S3	T3S2R4	OTROS	A	B	C	K'	D	LATITUD	LONGITUD
T. Izq. Coahuilbampo	19.00	3	1	5553	7.1	57.6	6.1	4.4	2.6	14.6	2.4	4.3	0.9	64.7	6.1	29.2	0.070	0.501	25.970653	-109.039809
T. Izq. Coahuilbampo	19.00	3	2	5855	6.6	55.8	6.2	5.1	3.2	14.9	2.6	4.8	0.8	62.4	6.2	31.4	0.069	0.501	25.970729	-109.040049
Poblado Chico	50.00	3	1	4813	6.1	62.9	7.0	4.7	1.4	12.9	1.2	3.1	0.7	69.0	7.0	24.0	0.067	0.563	26.228046	-109.054358
Poblado Chico	50.00	3	2	4931	5.8	60.0	7.5	4.6	1.2	15.2	1.3	3.5	0.9	65.8	7.5	26.7	0.075	0.563	26.228088	-109.054530
T. Der. El Fuerte	54.80	1	1	4849	5.2	58.9	6.5	4.1	2.6	13.2	3.2	5.4	0.9	64.1	6.5	29.4	0.069	0.590	26.261033	-109.044988
T. Der. El Fuerte	54.80	1	2	5225	5.5	62.1	6.7	3.2	1.6	13.1	2.0	4.9	0.9	67.6	6.7	25.7	0.082	0.590	26.261074	-109.045151
T. Der. El Fuerte	54.80	3	1	5030	6.2	57.8	6.2	4.3	2.2	14.2	2.6	5.6	0.9	64.0	6.2	29.8	0.076	0.508	26.278740	-109.039922
T. Der. El Fuerte	54.80	3	2	5054	6.3	57.3	6.5	4.1	2.3	14.3	2.5	5.7	1.0	63.6	6.5	29.9	0.072	0.508	26.280452	-109.039620
Lim. Edos. Term. Sin. Ppia. Son.	69.80																			
T. Izq. Camahuiroa	93.90	1	1	4850	7.3	55.2	6.4	6.0	2.1	15.8	2.3	3.9	1.0	62.5	6.4	31.1	0.066	0.590	26.573585	-109.155520
T. Izq. Camahuiroa	93.90	1	2	5347	7.9	52.9	6.8	6.8	2.2	16.2	2.2	4.0	1.0	60.8	6.8	32.4	0.072	0.590	26.573531	-109.155604
X. C. Alamos - Masiaca	114.30	1	1	3919	11.3	45.5	9.0	5.7	2.1	18.0	4.3	3.3	0.8	56.8	9.0	34.2	0.074	0.594	26.716504	-109.278207
X. C. Alamos - Masiaca	114.30	1	2	4379	10.8	44.6	8.9	5.5	2.5	18.3	4.5	3.9	1.0	55.4	8.9	35.7	0.067	0.594	26.716350	-109.278438
T. Izq. Huatabampo	128.50	1	1	3398	4.7	56.4	6.7	4.7	3.8	14.3	2.9	5.5	1.0	61.1	6.7	32.2	0.088	0.530	26.836476	-109.365910
T. Izq. Huatabampo	128.50	1	2	3906	4.5	57.2	6.8	4.7	3.6	14.1	2.3	5.9	0.9	61.7	6.8	31.5	0.073	0.530	26.836362	-109.366170
Plaza de Cobro Estacion Don (La Jaula)	129.90	2	1	2755	0.2	44.2	7.0	2.5	2.4	28.9	3.2	9.0	2.6	44.4	7.0	48.6	0.086	0.500	26.849735	-109.373267
Plaza de Cobro Estacion Don (La Jaula)	129.90	2	2	2755	0.2	44.2	7.0	2.5	2.4	28.9	3.2	9.0	2.6	44.4	7.0	48.6	0.086	0.500	26.849735	-109.373267
Navojoa	155.00	1	1	6528	9.1	55.3	4.8	5.9	3.3	15.2	2.2	3.4	0.8	64.4	4.8	30.8	0.095	0.644	27.029162	-109.434969
Navojoa	155.00	1	2	7150	8.6	55.6	5.1	6.5	3.1	14.8	2.0	3.4	0.9	64.2	5.1	30.7	0.113	0.644	27.029530	-109.435270
Navojoa	155.00	3	1	7830	13.5	74.9	4.2	3.9	1.8	1.3	0.1	0.3	0.0	88.4	4.2	7.4	0.071	0.521	27.103754	-109.447800
Navojoa	155.00	3	2	8016	13.2	76.5	3.2	3.8	1.5	1.2	0.1	0.4	0.1	89.7	3.2	7.1	0.075	0.521	27.103744	-109.447893
T. Izq. Villa Juárez	167.25	1	1	6633	5.1	67.1	4.4	4.0	2.8	10.7	1.9	3.1	0.9	72.2	4.4	23.4	0.066	0.552	27.146815	-109.496493
T. Izq. Villa Juárez	167.25	1	2	7186	5.3	67.2	4.3	4.2	3.0	10.5	1.6	3.1	0.8	72.5	4.3	23.2	0.069	0.552	27.146601	-109.496713
T. Izq. Villa Juárez	167.25	3	1	6435	5.8	59.9	7.6	4.3	1.8	13.2	2.1	4.3	1.0	65.7	7.6	26.7	0.066	0.555	27.158686	-109.511602
T. Izq. Villa Juárez	167.25	3	2	7359	6.0	60.4	7.2	4.1	2.1	12.8	1.7	4.8	0.9	66.4	7.2	26.4	0.068	0.555	27.158412	-109.511862
Plaza de Cobro Fundición	195.80	2	1	3774	0.3	55.3	6.4	2.7	2.1	21.7	2.7	6.7	2.1	55.6	6.4	38.0	0.086	0.500	27.320494	-109.719697
Plaza de Cobro Fundición	195.80	2	2	3774	0.3	55.3	6.4	2.7	2.1	21.7	2.7	6.7	2.1	55.6	6.4	38.0	0.086	0.500	27.320494	-109.719697
T. Der. Fundición	196.30	1	1	5430	3.2	59.8	6.6	4.8	2.3	16.5	2.3	3.6	0.9	63.0	6.6	30.4	0.069	0.510	27.312762	-109.709700
T. Der. Fundición	196.30	1	2	5584	3.6	60.7	7.1	4.0	1.9	15.9	2.3	3.5	1.0	64.3	7.1	28.6	0.072	0.510	27.312505	-109.709955
T. Der. Libramiento de Cd. Obregón (Cuota)	203.52	1	1	8374	3.9	65.1	7.8	4.0	1.8	11.8	1.9	2.8	0.9	69.0	7.8	23.2	0.075	0.541	27.360761	-109.771644
T. Der. Libramiento de Cd. Obregón (Cuota)	203.52	1	2	8243	3.7	67.2	6.6	3.6	1.6	12.0	1.4	3.0	0.9	70.9	6.6	22.5	0.079	0.541	27.360550	-109.771844
Cd. Obregón	222.70	1	1	10195	8.4	72.0	6.8	4.6	2.2	3.4	1.1	1.2	0.3	80.4	6.8	12.8	0.083	0.562	27.455057	-109.892858
Cd. Obregón	222.70	1	2	9770	8.2	72.4	5.4	4.5	2.6	3.9	1.5	1.2	0.3	80.6	5.4	14.0	0.111	0.562	27.454814	-109.893088

SONORA

19 CARR: Santa Ana - Sonoita

CLAVE: 26080

RUTA: MEX-002D-MEX

AÑO: 2025

LUGAR	ESTACION				CLASIFICACION VEHICULAR EN PORCIENTO														COORDENADAS	
	KM	TE	SC	TDPA	M	A	B	C2	C3	T3S2	T3S3	T3S2R4	OTROS	A	B	C	K'	D	LATITUD	LONGITUD
Santa Ana	0.00	3	1	3957	3.0	55.0	8.2	5.4	2.6	17.2	2.6	5.1	0.9	58.0	8.2	33.8	0.070	0.529	30.553650	-111.130622
Santa Ana	0.00	3	2	4179	3.1	54.7	8.9	5.6	2.4	17.0	2.1	5.3	0.9	57.8	8.9	33.3	0.060	0.529	30.553414	-111.130830
El Ocuca	31.55	1	1	2916	2.5	51.1	7.6	3.8	2.2	22.4	3.1	6.5	0.8	53.6	7.6	38.8	0.080	0.536	30.585658	-111.429475
El Ocuca	31.55	1	2	3203	2.4	50.1	7.2	4.5	2.7	22.8	2.7	6.8	0.8	52.5	7.2	40.3	0.073	0.536	30.585583	-111.429472
El Ocuca	31.55	3	1	3190	2.6	52.3	7.8	4.1	2.1	21.3	2.7	6.2	0.9	54.9	7.8	37.3	0.069	0.502	30.585618	-111.439985
El Ocuca	31.55	3	2	3107	2.6	52.7	7.3	4.2	1.9	21.5	2.5	6.4	0.9	55.3	7.3	37.4	0.070	0.502	30.585486	-111.439997
Altar	72.80	1	1	3175	2.5	53.8	8.2	3.2	1.5	20.9	2.9	6.0	1.0	56.3	8.2	35.5	0.064	0.513	30.701464	-111.816709
Altar	72.80	1	2	3588	2.4	53.5	8.4	3.4	1.6	20.8	2.7	6.3	0.9	55.9	8.4	35.7	0.056	0.513	30.701059	-111.816179
Altar	72.80	3	1	4406	2.5	61.0	6.8	4.6	1.6	16.2	1.7	4.7	0.9	63.5	6.8	29.7	0.066	0.516	30.713457	-111.852754
Altar	72.80	3	2	3958	2.4	61.0	6.5	4.6	1.4	16.4	1.9	4.8	1.0	63.4	6.5	30.1	0.063	0.516	30.713378	-111.852736
T. Izq. Estación Pitiquito	94.28	1	1	3735	1.5	61.1	6.7	3.8	1.8	16.3	2.7	5.3	0.8	62.6	6.7	30.7	0.072	0.542	30.689051	-112.031091
T. Izq. Estación Pitiquito	94.28	1	2	3948	1.7	61.0	6.7	3.6	1.9	16.4	2.7	5.3	0.7	62.7	6.7	30.6	0.071	0.542	30.688975	-112.031056
Caborca	103.83	1	0	10985	4.0	70.7	4.1	3.0	1.2	11.6	1.5	3.1	0.8	74.7	4.1	21.2	0.061	0.523	30.710142	-112.127160
Cozón	180.30	1	0	4861	3.8	37.8	9.4	5.1	2.1	29.2	3.4	8.2	1.0	41.6	9.4	49.0	0.061	0.645	31.302484	-112.558050
Sonoita	253.70	1	0	5370	4.5	44.3	8.9	3.6	2.0	26.1	3.2	6.3	1.1	48.8	8.9	42.3	0.063	0.516	31.845703	-112.859381

20 CARR: Agua Prieta - Bavispe

CLAVE:

RUTA: SON-069

AÑO: 2025

LUGAR	ESTACION				CLASIFICACION VEHICULAR EN PORCIENTO														COORDENADAS		
	KM	TE	SC	TDPA	M	A	B	C2	C3	T3S2	T3S3	T3S2R4	OTROS	A	B	C	K'	D	LATITUD	LONGITUD	
Agua Prieta	0.00	3	0	719	2.7	93.7	0.3	2.1	0.5	0.4	0.2	0.1	0.0	96.4	0.3	3.3	0.160	0.530	31.292101	-109.495108	
Bavispe	147.00																				

21 CARR: Altar - Sáric

CLAVE: 26233

RUTA: SON-064

AÑO: 2025

LUGAR	ESTACION				CLASIFICACION VEHICULAR EN PORCIENTO														COORDENADAS	
	KM	TE	SC	TDPA	M	A	B	C2	C3	T3S2	T3S3	T3S2R4	OTROS	A	B	C	K'	D	LATITUD	LONGITUD
T. C. Santa Ana - Sonoita	0.00	3	0	1267	2.2	82.2	0.5	14.2	0.6	0.3	0.0	0.0	0.0	84.4	0.5	15.1	0.089	0.549	30.722269	-111.831192
Sáric	68.00	1	0	423	2.3	89.0	1.1	6.8	0.7	0.0	0.1	0.0	0.0	91.3	1.1	7.6	0.092	0.564	31.098255	-111.390704

22 CARR: Caborca - El Desemboque

CLAVE: 26225

RUTA: SON-037

AÑO: 2025

LUGAR	ESTACION				CLASIFICACION VEHICULAR EN PORCIENTO														COORDENADAS	
	KM	TE	SC	TDPA	M	A	B	C2	C3	T3S2	T3S3	T3S2R4	OTROS	A	B	C	K'	D	LATITUD	LONGITUD
Caborca	0.00	3	1	3288	2.7	91.5	1.8	2.4	0.8	0.4	0.2	0.2	0.0	94.2	1.8	4.0	0.082	0.520	30.709269	-112.177205

SONORA

22 CARR: Caborca - El Desemboque

CLAVE: 26225

RUTA: SON-037

AÑO: 2025

LUGAR	ESTACION				CLASIFICACION VEHICULAR EN PORCIENTO													COORDENADAS		
	KM	TE	SC	TDPA	M	A	B	C2	C3	T3S2	T3S3	T3S2R4	OTROS	A	B	C	K'	D	LATITUD	LONGITUD
Caborca	0.00	3	2	3123	2.8	92.3	1.4	2.4	0.7	0.2	0.1	0.1	0.0	95.1	1.4	3.5	0.084	0.520	30.709194	-112.177197
T. Der. Productora Nal. de Semillas	4.20	3	0	4584	3.0	88.7	2.6	3.4	1.1	0.8	0.2	0.2	0.0	91.7	2.6	5.7	0.091	0.545	30.704293	-112.204538
T. Izq. Ramal El Deseo	6.90	3	0	3849	1.7	83.9	4.2	7.2	1.6	0.9	0.3	0.2	0.0	85.6	4.2	10.2	0.083	0.530	30.702431	-112.214373
T. Der. El Sahuaro	61.20	3	0	1299	4.3	87.4	0.8	5.3	1.5	0.4	0.2	0.1	0.0	91.7	0.8	7.5	0.095	0.524	30.801106	-112.720040
El Desemboque	102.30																			

23 CARR: Calle 36 Norte - Puerto de La Libertad

CLAVE: 26117

RUTA: SON-029

AÑO: 2025

LUGAR	ESTACION				CLASIFICACION VEHICULAR EN PORCIENTO													COORDENADAS		
	KM	TE	SC	TDPA	M	A	B	C2	C3	T3S2	T3S3	T3S2R4	OTROS	A	B	C	K'	D	LATITUD	LONGITUD
T. C. Hermosillo - Bahía Kino	0.00	3	0	300	5.0	80.8	1.6	5.1	2.1	3.9	0.7	0.8	0.0	85.8	1.6	12.6	0.117	0.514	28.904009	-111.714103
Casas Grandes	45.00	3	0	376	3.2	80.8	2.2	6.6	2.5	3.5	0.5	0.7	0.0	84.0	2.2	13.8	0.098	0.541	29.185446	-111.719042
Puerto de La Libertad	156.00																			

24 CARR: Esperanza - Presa Álvaro Obregón

CLAVE: 26242

RUTA: SON-117

AÑO: 2025

LUGAR	ESTACION				CLASIFICACION VEHICULAR EN PORCIENTO													COORDENADAS		
	KM	TE	SC	TDPA	M	A	B	C2	C3	T3S2	T3S3	T3S2R4	OTROS	A	B	C	K'	D	LATITUD	LONGITUD
Esperanza	0.00	3	0	5903	5.4	84.3	1.2	4.1	2.5	1.2	0.7	0.5	0.1	89.7	1.2	9.1	0.179	0.519	27.584144	-109.917666
T. Der. Los Hornos	17.00	3	0	1341	7.8	89.0	0.4	1.5	0.5	0.3	0.3	0.2	0.0	96.8	0.4	2.8	0.210	0.662	27.720554	-109.897725
Presa Álvaro Obregón	32.00																			

25 CARR: Hermosillo - Bahía Kino

CLAVE: 26109

RUTA: SON-100

AÑO: 2025

LUGAR	ESTACION				CLASIFICACION VEHICULAR EN PORCIENTO													COORDENADAS		
	KM	TE	SC	TDPA	M	A	B	C2	C3	T3S2	T3S3	T3S2R4	OTROS	A	B	C	K'	D	LATITUD	LONGITUD
Hermosillo	0.00	3	1	28896	4.3	86.8	1.7	4.9	0.5	0.7	0.2	0.6	0.3	91.1	1.7	7.2	0.077	0.525	29.094885	-111.010812
Hermosillo	0.00	3	2	29261	4.2	87.7	1.3	4.2	0.5	0.9	0.4	0.6	0.2	91.9	1.3	6.8	0.080	0.525	29.094754	-111.010808
T. Der. Aeropuerto	11.00	1	1	15530	8.4	80.2	1.3	4.6	2.9	1.5	0.4	0.4	0.3	88.6	1.3	10.1	0.104	0.674	29.090792	-111.043433
T. Der. Aeropuerto	11.00	1	2	13415	8.5	80.7	0.8	4.6	2.9	1.3	0.4	0.4	0.4	89.2	0.8	10.0	0.085	0.674	29.090655	-111.043458
T. Der. Aeropuerto	11.00	3	1	11033	5.2	83.2	1.3	4.9	3.0	1.4	0.3	0.4	0.3	88.4	1.3	10.3	0.117	0.714	29.088354	-111.052985
T. Der. Aeropuerto	11.00	3	2	11434	5.3	83.2	1.5	4.8	2.9	1.3	0.4	0.4	0.2	88.5	1.5	10.0	0.099	0.714	29.088247	-111.052938
T. Izq. Calle 4 Sur	53.00	3	0	7828	1.8	90.2	1.4	3.9	0.9	1.3	0.2	0.2	0.1	92.0	1.4	6.6	0.102	0.525	28.839500	-111.403829
Miguel Alemán	61.20	1	0	7274	2.1	89.0	1.6	4.4	1.0	1.4	0.3	0.1	0.1	91.1	1.6	7.3	0.117	0.587	28.839724	-111.457198
T. Der. Calle 36	84.40	1	0	3637	1.7	88.3	1.3	5.9	1.0	1.1	0.2	0.3	0.2	90.0	1.3	8.7	0.170	0.552	28.831357	-111.702608

SONORA

25 CARR: Hermosillo - Bahía Kino

CLAVE: 26109

RUTA: SON-100

AÑO: 2025

LUGAR	ESTACION				CLASIFICACION VEHICULAR EN PORCIENTO													COORDENADAS		
	KM	TE	SC	TDPA	M	A	B	C2	C3	T3S2	T3S3	T3S2R4	OTROS	A	B	C	K'	D	LATITUD	LONGITUD
T. Der. Calle 36	84.40	3	0	3647	1.4	88.1	1.5	5.8	1.0	1.1	0.3	0.6	0.2	89.5	1.5	9.0	0.174	0.528	28.831057	-111.727775
Bahía Kino	106.50	1	0	3356	1.3	91.6	0.9	3.8	1.3	0.6	0.3	0.1	0.1	92.9	0.9	6.2	0.178	0.515	28.828505	-111.928410

26 CARR: Hermosillo - Sahuaripa

CLAVE: 26230

RUTA: SON-020

AÑO: 2025

LUGAR	ESTACION				CLASIFICACION VEHICULAR EN PORCIENTO													COORDENADAS		
	KM	TE	SC	TDPA	M	A	B	C2	C3	T3S2	T3S3	T3S2R4	OTROS	A	B	C	K'	D	LATITUD	LONGITUD
T. C. Hermosillo - Yecora	0.00	3	1	1824	1.7	72.6	3.6	6.5	3.5	5.6	4.4	1.8	0.3	74.3	3.6	22.1	0.108	0.506	29.030909	-110.871777
T. C. Hermosillo - Yecora	0.00	3	2	1850	1.8	72.5	2.6	6.6	3.3	5.3	4.8	2.3	0.8	74.3	2.6	23.1	0.093	0.506	29.030941	-110.872617
X. C. Libramiento de Hermosillo Cuota	8.70																			
Mazatán	88.00	1	0	989	4.3	84.3	1.4	4.6	2.0	1.0	0.7	0.8	0.9	88.6	1.4	10.0	0.111	0.500	29.005579	-110.152695
Mazatán	88.00	3	0	691	6.3	83.3	1.5	4.0	1.8	1.1	0.7	0.9	0.4	89.6	1.5	8.9	0.119	0.598	28.999273	-110.137817
Sahuaripa	199.00																			

27 CARR: Hornos - San Nicolás

CLAVE: 26243

RUTA: SON-012

AÑO: 2025

LUGAR	ESTACION				CLASIFICACION VEHICULAR EN PORCIENTO													COORDENADAS		
	KM	TE	SC	TDPA	M	A	B	C2	C3	T3S2	T3S3	T3S2R4	OTROS	A	B	C	K'	D	LATITUD	LONGITUD
Hornos	0.00	3	0	1106	5.3	77.3	1.0	11.8	2.2	1.6	0.5	0.2	0.1	82.6	1.0	16.4	0.152	0.869	27.720033	-109.892020
Rosario	58.00	1	0	892	7.5	82.5	1.3	5.2	1.2	1.4	0.6	0.2	0.1	90.0	1.3	8.7	0.083	0.622	27.842177	-109.383825
San Nicolás	137.20																			

28 CARR: Huatabampo - Bacabachi

CLAVE: 26237

RUTA: SON-176

AÑO: 2025

LUGAR	ESTACION				CLASIFICACION VEHICULAR EN PORCIENTO													COORDENADAS		
	KM	TE	SC	TDPA	M	A	B	C2	C3	T3S2	T3S3	T3S2R4	OTROS	A	B	C	K'	D	LATITUD	LONGITUD
Huatabampo	0.00	3	0	1722	23.7	66.3	0.6	2.1	3.3	2.7	0.6	0.7	0.0	90.0	0.6	9.4	0.083	0.545	26.825230	-109.603466
T. C. Los Mochis - Cd. Obregón (Cuota)	29.00	1	0	894	23.4	61.7	2.5	4.2	3.2	3.1	1.4	0.5	0.0	85.1	2.5	12.4	0.088	0.532	26.838726	-109.369225

29 CARR: La Alameda - El Sahuaro

CLAVE: 26234

RUTA: SON-037

AÑO: 2025

LUGAR	ESTACION				CLASIFICACION VEHICULAR EN PORCIENTO													COORDENADAS		
	KM	TE	SC	TDPA	M	A	B	C2	C3	T3S2	T3S3	T3S2R4	OTROS	A	B	C	K'	D	LATITUD	LONGITUD
T. C. Caborca - El Desemboque	0.00	3	0	3315	1.8	83.3	3.9	5.7	2.9	1.5	0.2	0.6	0.1	85.1	3.9	11.0	0.086	0.517	30.819793	-112.740824
Estación El Sahuaro	47.00	1	0	1238	3.1	57.9	9.4	18.1	5.8	4.1	1.0	0.5	0.1	61.0	9.4	29.6	0.088	0.569	31.036920	-112.945739

SONORA

30 CARR: Mazocahui - Cananea

CLAVE: 26118

RUTA: SON-118

AÑO: 2025

LUGAR	ESTACION				CLASIFICACION VEHICULAR EN PORCIENTO										COORDENADAS					
	KM	TE	SC	TDPA	M	A	B	C2	C3	T3S2	T3S3	T3S2R4	OTROS	A	B	C	K'	D	LATITUD	LONGITUD
T. C. Hermosillo - Moctezuma	0.00	3	0	1206	1.3	82.1	1.7	9.1	2.0	1.7	0.8	0.7	0.6	83.4	1.7	14.9	0.098	0.576	29.548216	-110.121765
Baviácora	20.65	3	0	1719	1.1	84.0	1.2	10.9	1.1	1.1	0.6	0.0	0.0	85.1	1.2	13.7	0.076	0.592	29.726927	-110.166538
Arizpe	98.00	1	0	485	3.9	76.5	2.6	12.6	2.6	1.2	0.6	0.0	0.0	80.4	2.6	17.0	0.105	0.608	30.329767	-110.181228
T. C. Agua Prieta - Imuris	206.30	1	0	3429	3.4	74.6	3.6	8.5	3.6	2.9	1.3	1.6	0.5	78.0	3.6	18.4	0.108	0.675	30.986944	-110.258285

31 CARR: Navojoa - Álamos

CLAVE: 26240

RUTA: SON-013

AÑO: 2025

LUGAR	ESTACION				CLASIFICACION VEHICULAR EN PORCIENTO										COORDENADAS					
	KM	TE	SC	TDPA	M	A	B	C2	C3	T3S2	T3S3	T3S2R4	OTROS	A	B	C	K'	D	LATITUD	LONGITUD
Navojoa	0.00	3	0	4334	12.5	78.9	1.0	2.8	2.1	1.4	0.4	0.8	0.1	91.4	1.0	7.6	0.272	0.897	27.074150	-109.405785
Álamos	52.80	1	0	3153	8.8	84.0	1.0	3.4	1.4	1.0	0.2	0.2	0.0	92.8	1.0	6.2	0.154	0.676	27.046382	-108.980782

32 CARR: Navojoa - Yavaros

CLAVE: 26229

RUTA: SON-056

AÑO: 2025

LUGAR	ESTACION				CLASIFICACION VEHICULAR EN PORCIENTO										COORDENADAS					
	KM	TE	SC	TDPA	M	A	B	C2	C3	T3S2	T3S3	T3S2R4	OTROS	A	B	C	K'	D	LATITUD	LONGITUD
Navojoa	0.00	3	1	4505	10.6	82.5	2.2	1.8	1.4	0.9	0.3	0.2	0.1	93.1	2.2	4.7	0.086	0.530	27.040780	-109.466283
Navojoa	0.00	3	2	4652	10.9	83.0	2.0	1.6	1.3	0.6	0.4	0.1	0.1	93.9	2.0	4.1	0.078	0.530	27.040686	-109.466199
Yavaros	55.00	1	0	2149	22.5	71.3	2.2	2.4	0.8	0.4	0.2	0.2	0.0	93.8	2.2	4.0	0.102	0.507	26.706059	-109.545111

33 CARR: Nogales - San Antonio

CLAVE: 26110

RUTA: SON

AÑO: 2025

LUGAR	ESTACION				CLASIFICACION VEHICULAR EN PORCIENTO										COORDENADAS					
	KM	TE	SC	TDPA	M	A	B	C2	C3	T3S2	T3S3	T3S2R4	OTROS	A	B	C	K'	D	LATITUD	LONGITUD
Nogales	0.00																			
San Antonio	58.00	1	0	527	1.3	90.2	2.0	4.8	1.5	0.1	0.1	0.0	0.0	91.5	2.0	6.5	0.121	0.594	31.136541	-110.717913

34 CARR: Ramal a Aeropuerto de Guaymas

CLAVE: 26568

RUTA: SON

AÑO: 2025

LUGAR	ESTACION				CLASIFICACION VEHICULAR EN PORCIENTO										COORDENADAS					
	KM	TE	SC	TDPA	M	A	B	C2	C3	T3S2	T3S3	T3S2R4	OTROS	A	B	C	K'	D	LATITUD	LONGITUD
T. C. Cd. Obregón - Hermosillo	0.00	3	1	7949	6.8	81.4	1.9	4.8	1.4	1.3	0.8	1.2	0.4	88.2	1.9	9.9	0.095	0.556	27.951834	-110.931051
T. C. Cd. Obregón - Hermosillo	0.00	3	2	8209	6.6	81.7	2.2	4.6	1.3	1.5	0.8	1.0	0.3	88.3	2.2	9.5	0.093	0.556	27.951967	-110.931188
Aeropuerto de Guaymas	3.00	3	0	5969	3.3	78.6	1.5	8.0	1.8	2.4	1.8	1.8	0.8	81.9	1.5	16.6	0.094	0.553	27.978018	-110.915109

SONORA

35 CARR: San Luis Río Colorado - Golfo de Santa Clara

CLAVE: 26226

RUTA: SON-040

AÑO: 2025

LUGAR	ESTACION				CLASIFICACION VEHICULAR EN PORCIENTO										COORDENADAS					
	KM	TE	SC	TDPA	M	A	B	C2	C3	T3S2	T3S3	T3S2R4	OTROS	A	B	C	K'	D	LATITUD	LONGITUD
San Luis Río Colorado	0.00	3	1	2481	1.4	83.9	1.4	10.1	1.2	1.4	0.3	0.2	0.1	85.3	1.4	13.3	0.078	0.504	32.438196	-114.849451
San Luis Río Colorado	0.00	3	2	2661	1.3	83.7	1.4	9.8	1.1	1.7	0.5	0.4	0.1	85.0	1.4	13.6	0.080	0.504	32.438173	-114.849430
T. Izq. Lagunitas	25.50	3	0	5357	1.5	87.2	1.3	6.0	1.0	1.8	0.9	0.2	0.1	88.7	1.3	10.0	0.075	0.536	32.316716	-114.952388
Golfo de Santa Clara	114.30	1	0	1740	2.8	78.6	2.0	11.1	1.2	1.6	1.1	1.4	0.2	81.4	2.0	16.6	0.108	0.590	31.707694	-114.525437

36 CARR: Sonoita - Pitiquito

CLAVE: 26022

RUTA: SON

AÑO: 2025

LUGAR	ESTACION				CLASIFICACION VEHICULAR EN PORCIENTO										COORDENADAS					
	KM	TE	SC	TDPA	M	A	B	C2	C3	T3S2	T3S3	T3S2R4	OTROS	A	B	C	K'	D	LATITUD	LONGITUD
Sonoita	0.00	3	0	945	1.3	86.4	1.3	9.7	0.3	0.8	0.2	0.0	0.0	87.7	1.3	11.0	0.088	0.518	31.852075	-112.821400
Pitiquito	170.00	1	0	480	3.9	87.0	3.5	2.9	1.0	1.1	0.1	0.5	0.0	90.9	3.5	5.6	0.110	0.566	30.726257	-112.093200

37 CARR: San Luis Río Colorado - Golfo de Santa Clara (Cuota)

CLAVE:

RUTA: SON-D

AÑO: 2025

LUGAR	ESTACION				CLASIFICACION VEHICULAR EN PORCIENTO										COORDENADAS					
	KM	TE	SC	TDPA	M	A	B	C2	C3	T3S2	T3S3	T3S2R4	OTROS	A	B	C	K'	D	LATITUD	LONGITUD
Libramiento de San Luis Río Colorado	0.00																			
Plaza de Cobro Estación Doctor	0.50	2	0	705	0.3	91.6	0.3	1.8	0.6	3.1	0.5	1.6	0.2	91.9	0.3	7.8	0.090	0.500	32.375135	-114.760664
Golfo de Santa Clara	44.60																			

38 CARR: T. C. (Hermosillo - Nogales) - Huásabas

CLAVE: 26231

RUTA: MEX-014-SON

AÑO: 2025

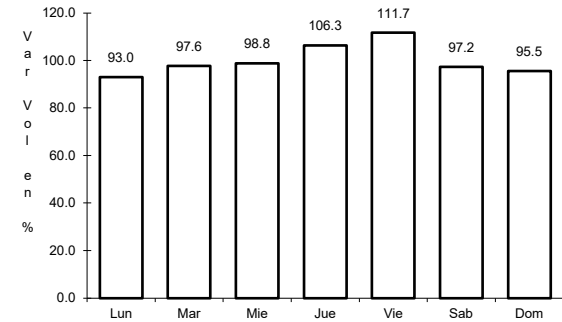
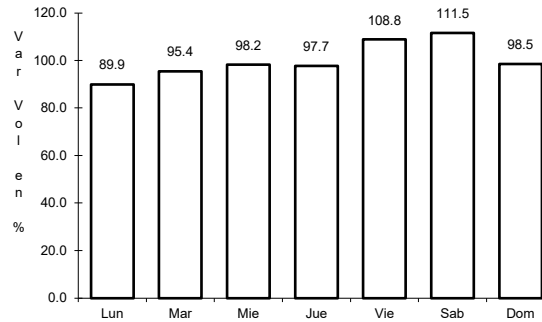
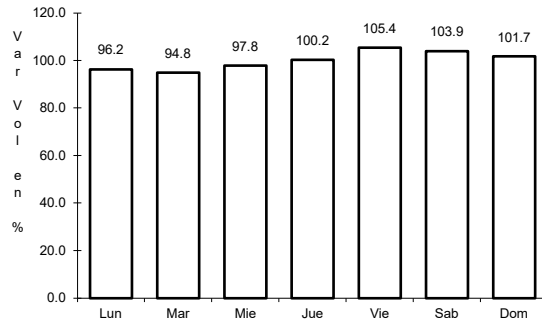
LUGAR	ESTACION				CLASIFICACION VEHICULAR EN PORCIENTO										COORDENADAS					
	KM	TE	SC	TDPA	M	A	B	C2	C3	T3S2	T3S3	T3S2R4	OTROS	A	B	C	K'	D	LATITUD	LONGITUD
T. C. Hermosillo - Nogales	0.00	3	1	9717	1.9	91.1	1.2	3.1	1.0	0.7	0.4	0.3	0.3	93.0	1.2	5.8	0.136	0.574	29.169247	-110.902271
T. C. Hermosillo - Nogales	0.00	3	2	9998	2.3	89.3	1.3	3.0	1.3	1.4	0.6	0.5	0.3	91.6	1.3	7.1	0.159	0.574	29.169350	-110.902320
Ures	62.00	3	0	3799	2.5	87.6	1.0	5.9	1.0	1.2	0.4	0.2	0.2	90.1	1.0	8.9	0.088	0.604	29.428004	-110.373780
Mazocahui	97.50	3	0	1087	3.2	60.2	4.5	15.2	4.7	5.8	4.2	1.8	0.4	63.4	4.5	32.1	0.101	0.609	29.544191	-110.118982
Moctezuma	165.00	1	0	1298	2.4	84.7	1.3	4.8	1.7	2.2	1.2	1.2	0.5	87.1	1.3	11.6	0.076	0.505	29.798801	-109.691696
Moctezuma	165.00	3	0	1334	3.2	86.9	1.3	4.3	1.9	1.4	1.0	0.0	0.0	90.1	1.3	8.6	0.083	0.541	29.800835	-109.666850
Huásabas	212.50	1	0	408	1.3	88.8	1.9	4.2	1.8	1.7	0.3	0.0	0.0	90.1	1.9	8.0	0.108	0.705	29.917421	-109.309467



1 CARR: Agua Prieta - Imuris

CLAVE: 26079

ruta: MEX-002



Km: 0.00      Tipo: 3      Sent: 1

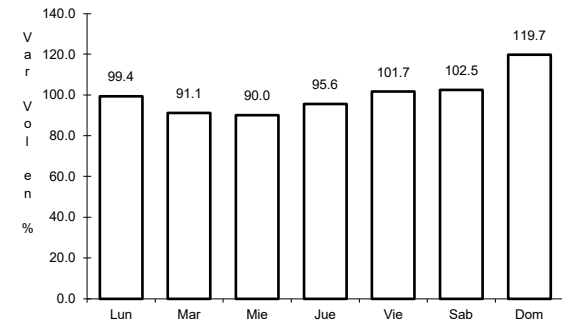
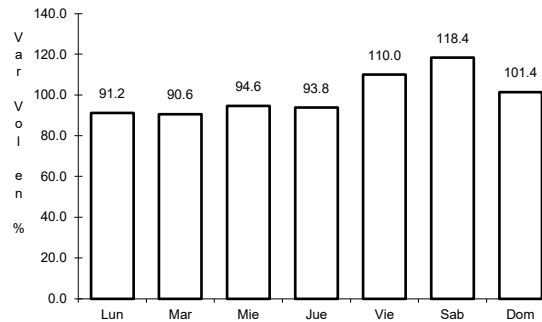
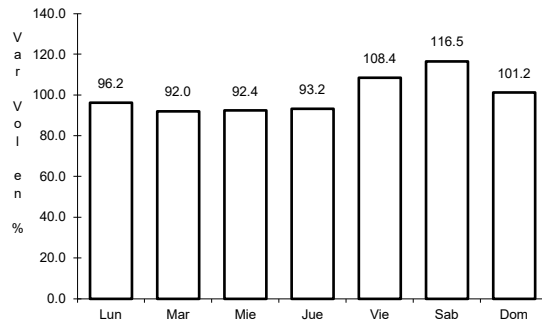
Km: 0.00      Tipo: 3      Sent: 2

Km: 162.70      Tipo: 1      Sent: 0

2 CARR: Guaymas - Hermosillo

CLAVE: 26444

ruta: MEX-015



Km: 133.00      Tipo: 1      Sent: 1

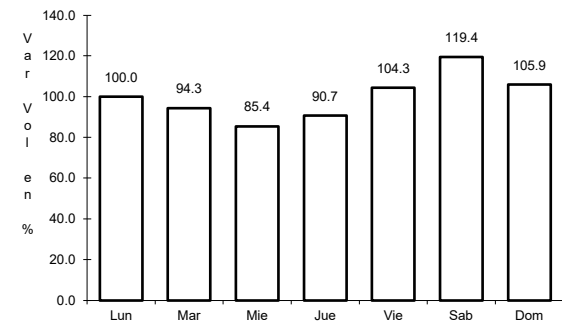
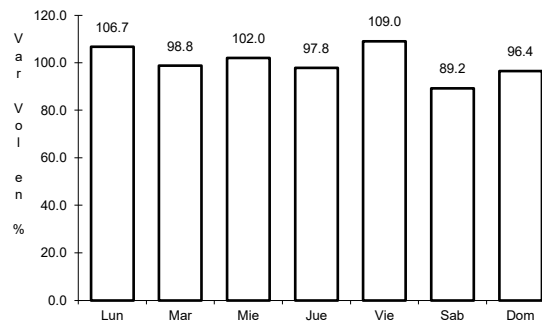
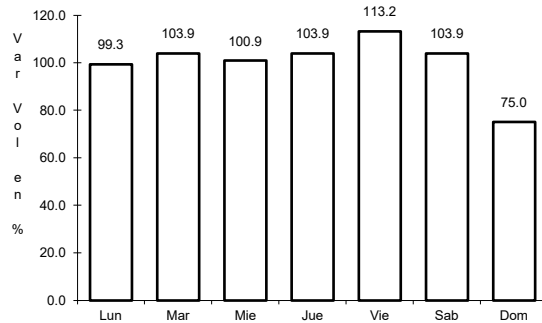
Km: 133.00      Tipo: 1      Sent: 2

Km: 251.00      Tipo: 1      Sent: 1

3 CARR: Hermosillo - Lim. Edos. Term. Son. Ppia. Chih. (Yécora)

CLAVE: 26251

ruta: MEX-016



Km: 4.00      Tipo: 3      Sent: 1

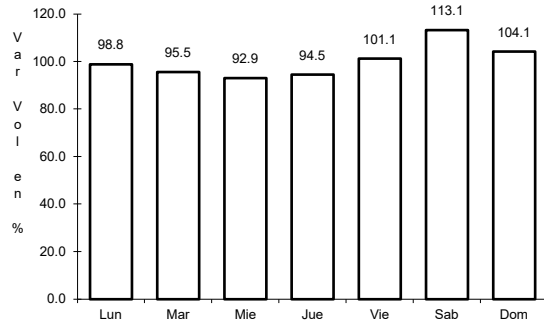
Km: 4.00      Tipo: 3      Sent: 2

Km: 280.00      Tipo: 3      Sent: 0

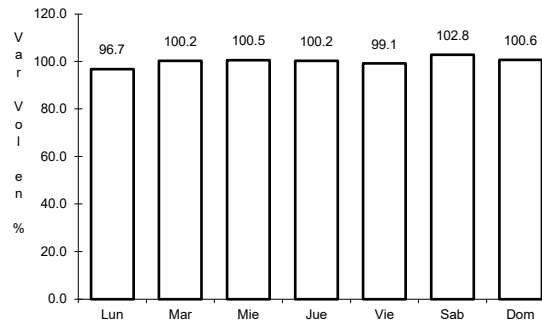
4 CARR: Janos - Agua Prieta

CLAVE: 00220

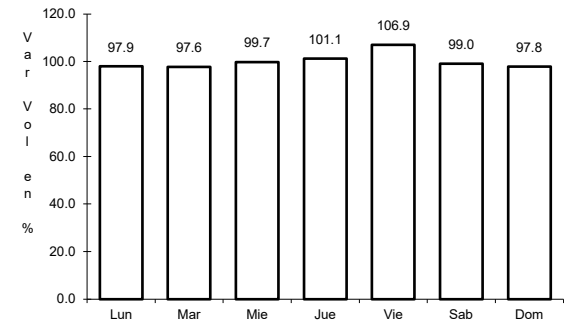
ruta: MEX-002



Km: 0.00                      Tipo: 3                      Sent: 0



Km: 56.00                      Tipo: 3                      Sent: 0

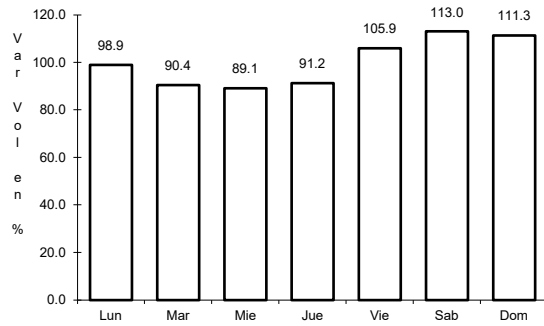


Km: 160.00                      Tipo: 1                      Sent: 0

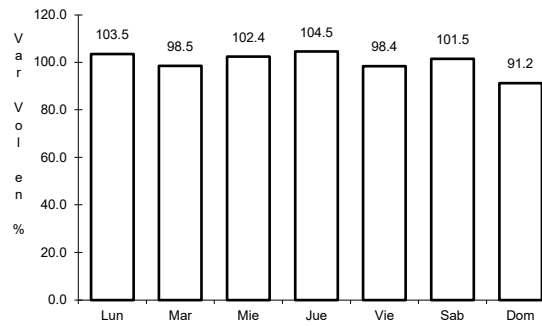
5 CARR: Magdalena de Kino - Nogales

CLAVE: 26444

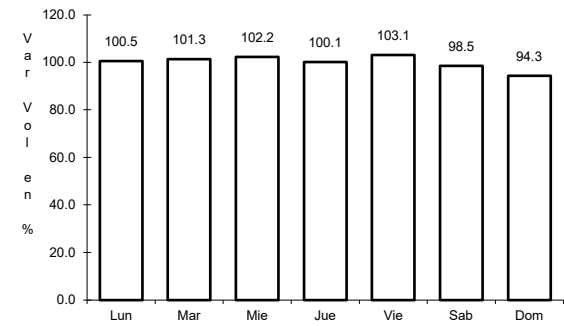
ruta: MEX-015



Km: 181.30                      Tipo: 3                      Sent: 1



Km: 181.30                      Tipo: 3                      Sent: 2

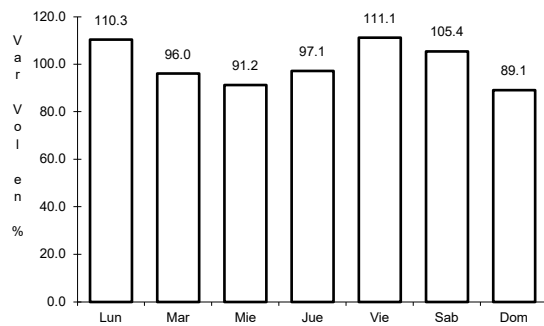


Km: 272.70                      Tipo: 1                      Sent: 1

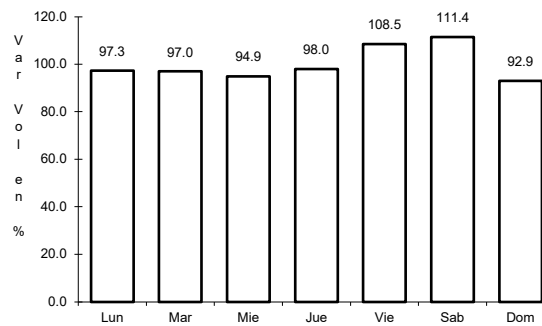
6 CARR: Moctezuma - Agua Prieta

CLAVE: 26027

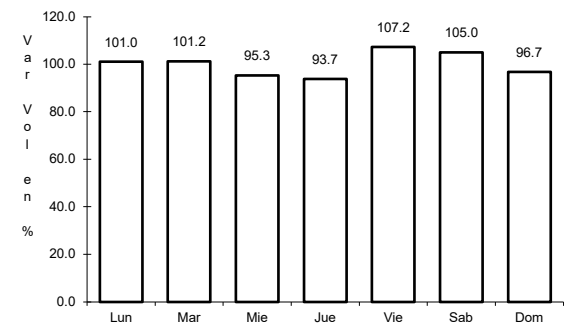
ruta: MEX-017



Km: 0.00                      Tipo: 3                      Sent: 0



Km: 81.00                      Tipo: 3                      Sent: 0

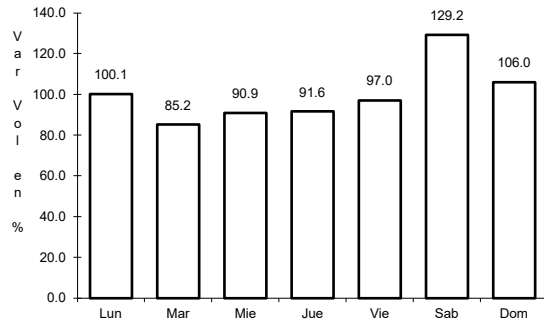


Km: 197.60                      Tipo: 1                      Sent: 0

7 CARR: Ramal a Naco

CLAVE: 26579

ruta: MEX-002



Km: 0.00

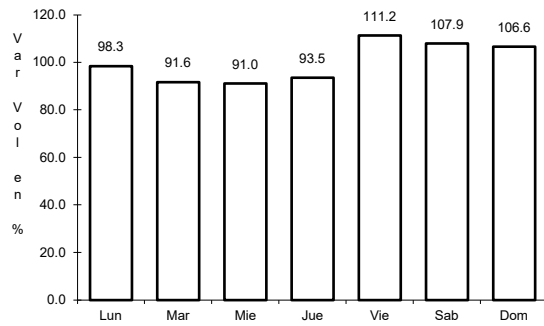
Tipo: 3

Sent: 0

8 CARR: Ramal a Puerta de México

CLAVE: 26577

ruta: MEX-002



Km: 0.00

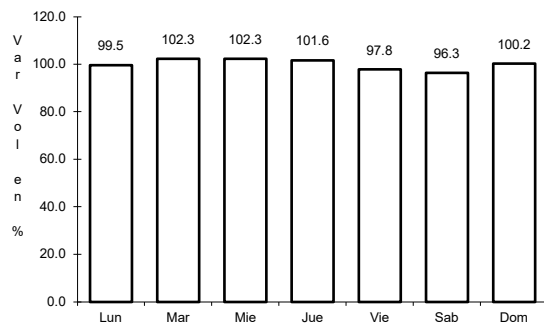
Tipo: 3

Sent: 0

9 CARR: Sonoita - Mexicali

CLAVE: 00081

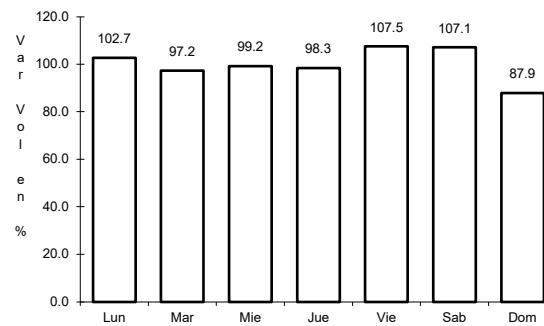
ruta: MEX-002



Km: 0.00

Tipo: 3

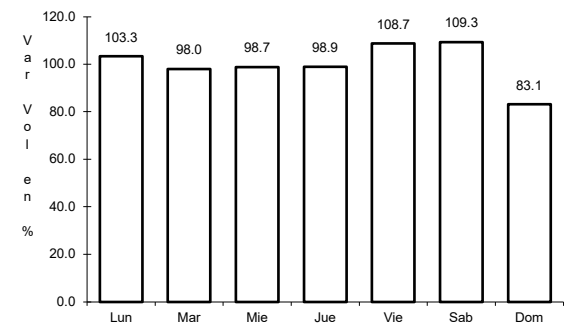
Sent: 0



Km: 256.47

Tipo: 1

Sent: 1



Km: 256.47

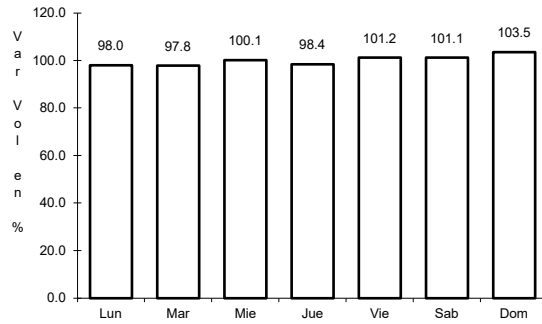
Tipo: 1

Sent: 2

10 CARR: Sonoita - Puerto Peñasco

CLAVE: 26232

ruta: MEX-002



Km: 0.00

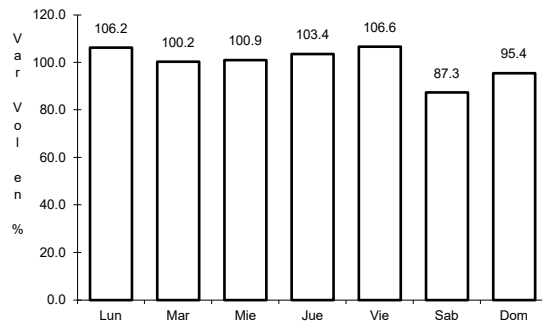
Tipo: 3

Sent: 0

11 CARR: Cd. Obregón - Guaymas (Cuota)

CLAVE: 26444

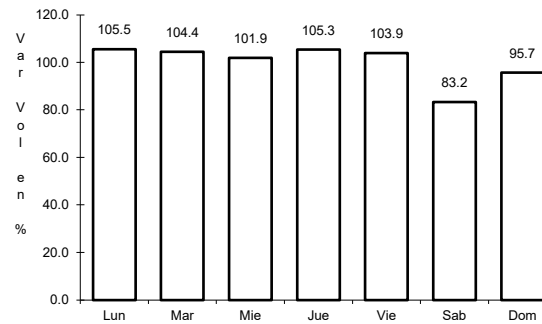
ruta: MEX-015D



Km: 7.96

Tipo: 1

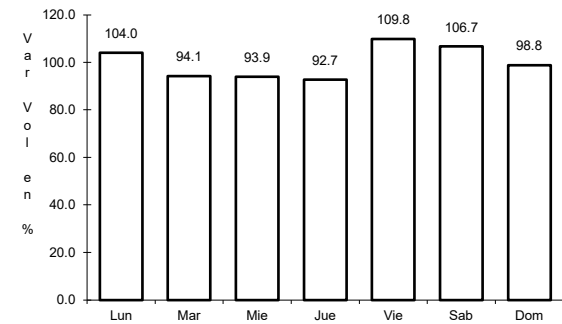
Sent: 1



Km: 7.96

Tipo: 1

Sent: 2



Km: 107.70

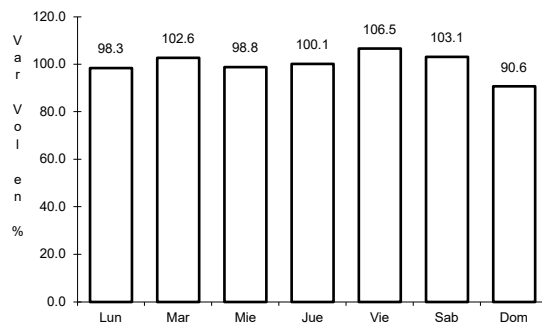
Tipo: 3

Sent: 0

12 CARR: Hermosillo - Magdalena de Kino (Cuota)

CLAVE: 26444

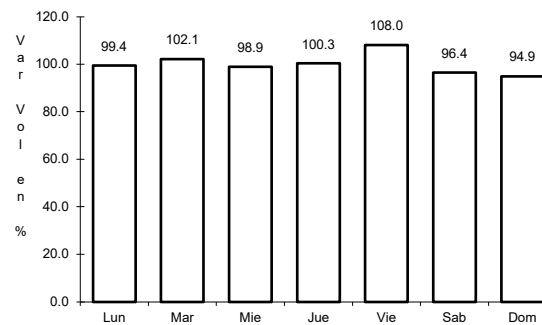
ruta: MEX-015D



Km: 0.00

Tipo: 3

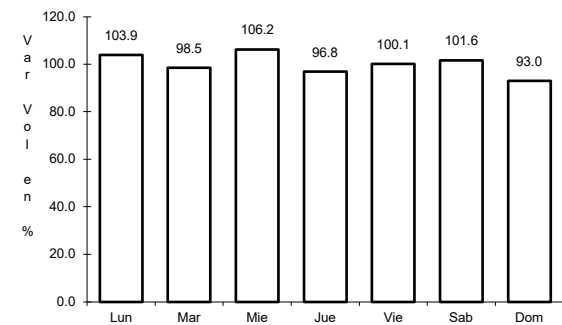
Sent: 1



Km: 0.00

Tipo: 3

Sent: 2



Km: 181.30

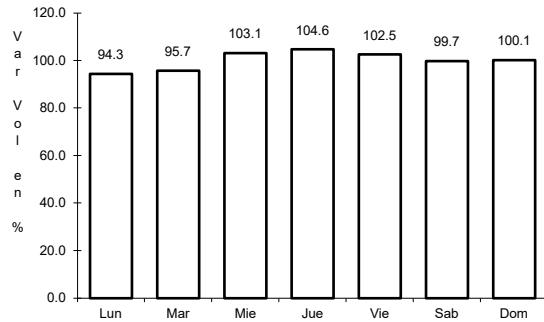
Tipo: 1

Sent: 1

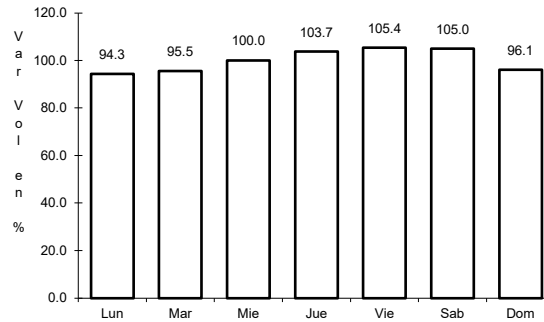
13 CARR: Libramiento de Ciudad Obregón (Cuota)

CLAVE:

ruta: MEX-015D



Km: 31.40      Tipo: 1      Sent: 0

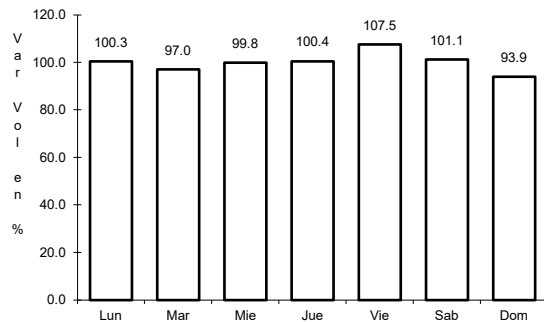


Km: 31.40      Tipo: 3      Sent: 0

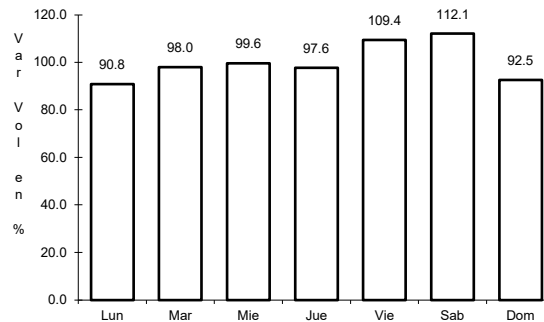
14 CARR: Libramiento de Empalme - Guaymas (Cuota)

CLAVE: 26256

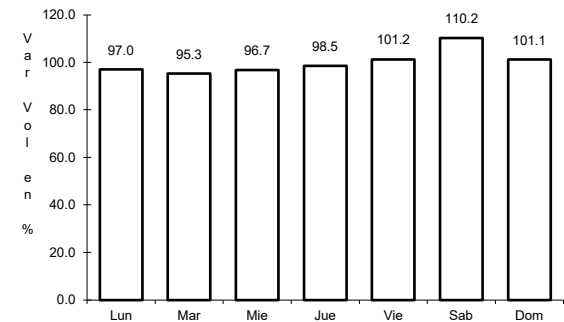
ruta: MEX-015D



Km: 0.00      Tipo: 3      Sent: 1



Km: 0.00      Tipo: 3      Sent: 2

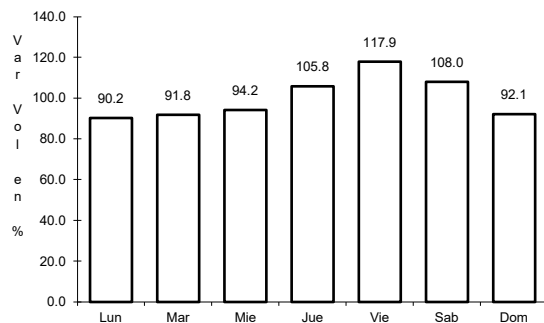


Km: 21.50      Tipo: 1      Sent: 1

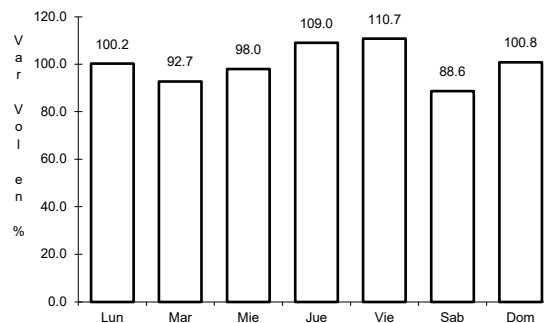
15 CARR: Libramiento de Hermosillo (Cuota)

CLAVE:

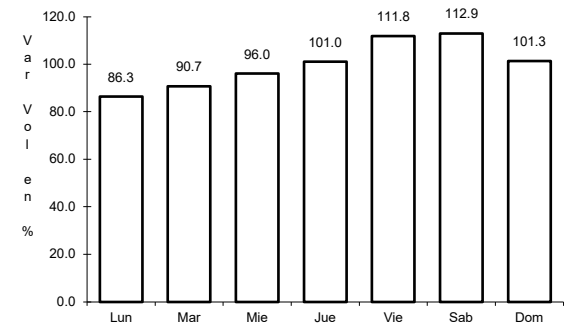
ruta: MEX-015D



Km: 0.00      Tipo: 3      Sent: 0



Km: 20.00      Tipo: 1      Sent: 0

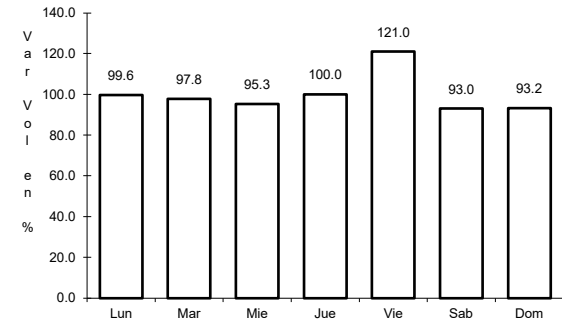
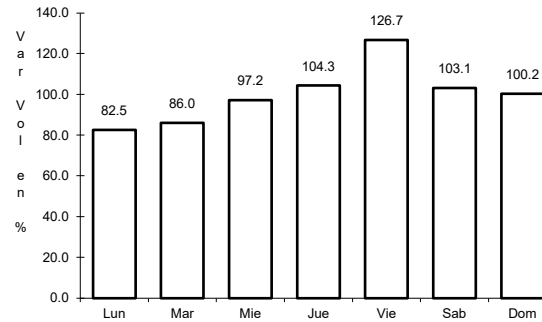
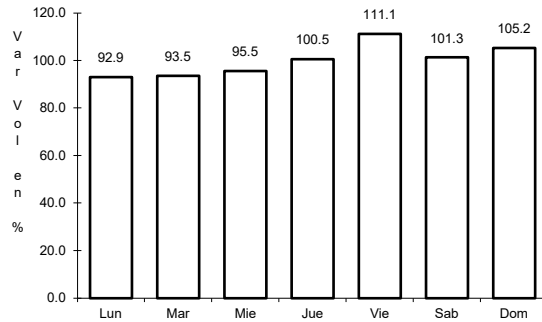


Km: 40.00      Tipo: 1      Sent: 0

16 CARR: Libramiento de Magdalena de Kino (Cuota)

CLAVE:

RUTA: MEX-015D



Km: 181.30      Tipo: 3      Sent: 1

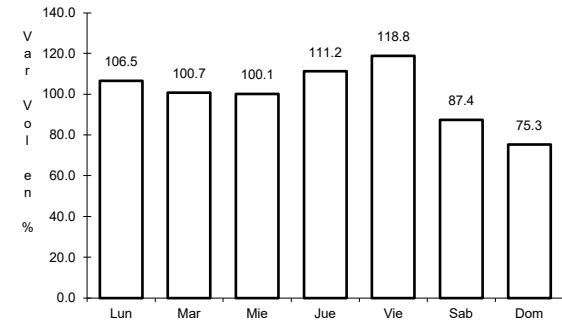
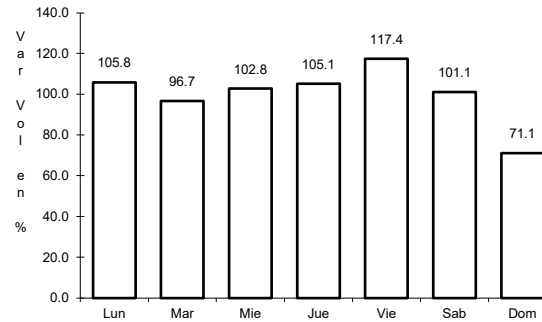
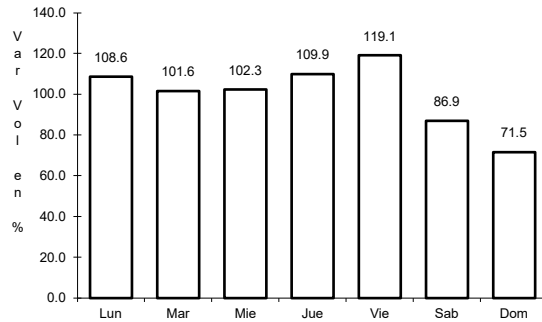
Km: 181.30      Tipo: 3      Sent: 2

Km: 193.00      Tipo: 1      Sent: 1

17 CARR: Libramiento de Nogales (Cuota)

CLAVE: 26100

RUTA: MEX-15D



Km: 0.00      Tipo: 3      Sent: 1

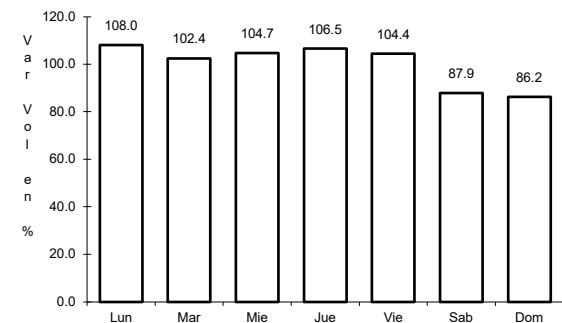
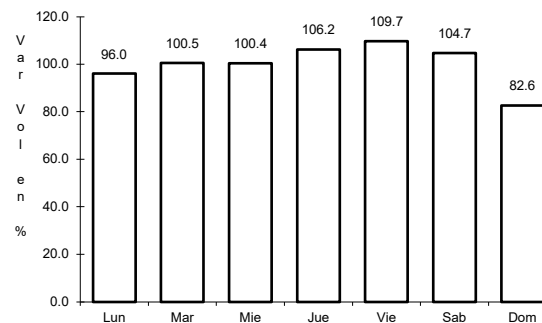
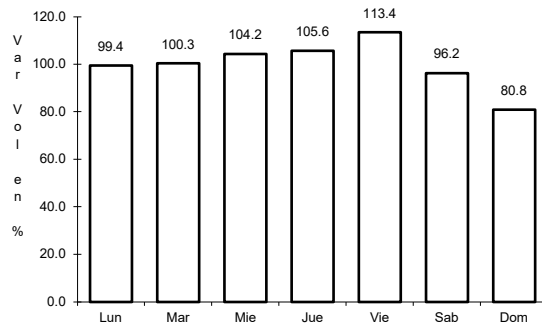
Km: 0.00      Tipo: 3      Sent: 2

Km: 12.50      Tipo: 1      Sent: 1

18 CARR: Los Mochis - Cd. Obregón (Cuota)

CLAVE: 26444

RUTA: MEX-015D



Km: 0.00      Tipo: 3      Sent: 1

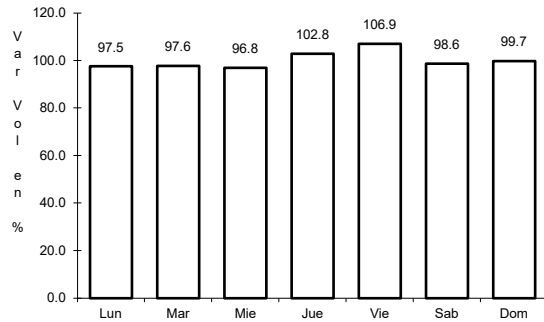
Km: 0.00      Tipo: 3      Sent: 2

Km: 222.70      Tipo: 1      Sent: 1

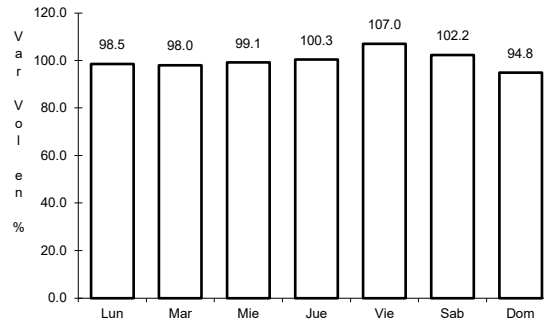
19 CARR: Santa Ana - Sonoita

CLAVE: 26080

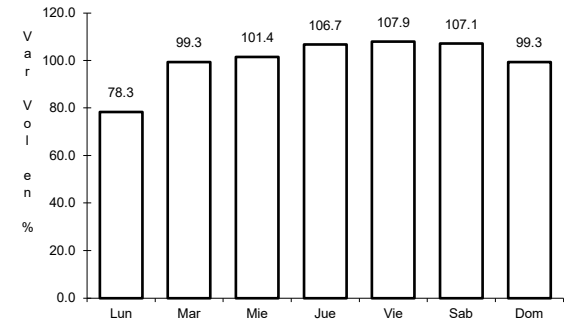
ruta: MEX-002D-MEX



Km: 0.00                      Tipo: 3                      Sent: 1



Km: 103.83                      Tipo: 1                      Sent: 0

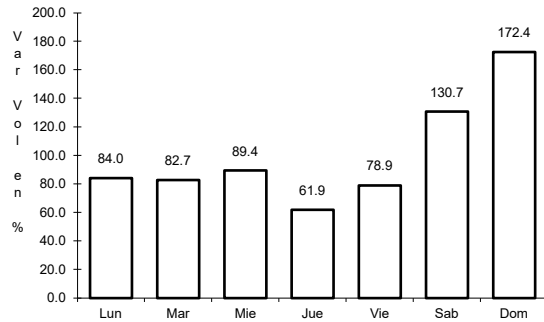


Km: 253.70                      Tipo: 1                      Sent: 0

20 CARR: Agua Prieta - Bavispe

CLAVE:

ruta: SON-069

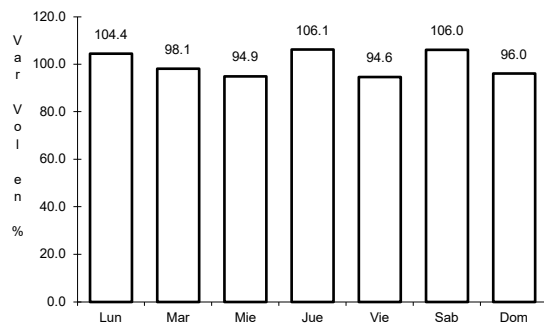


Km: 0.00                      Tipo: 3                      Sent: 0

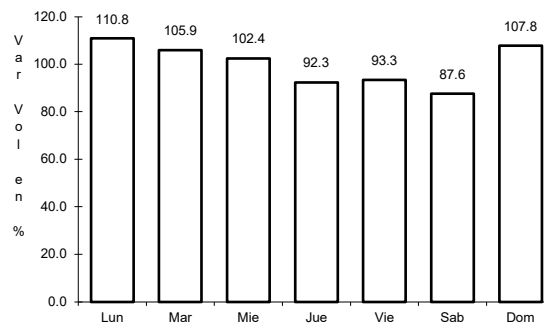
21 CARR: Altar - Sáric

CLAVE: 26233

ruta: SON-064



Km: 0.00                      Tipo: 3                      Sent: 0

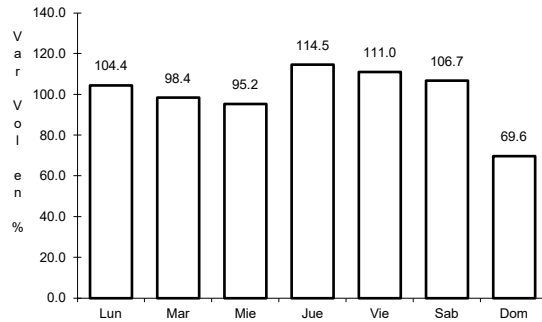


Km: 68.00                      Tipo: 1                      Sent: 0

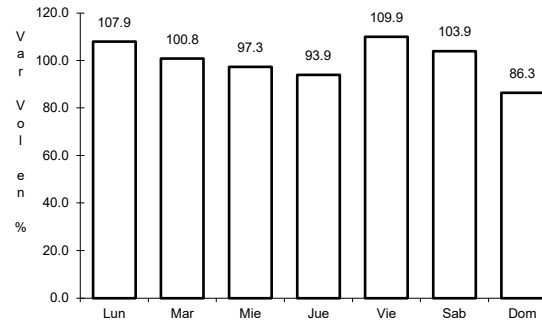
22 CARR: Caborca - El Desemboque

CLAVE: 26225

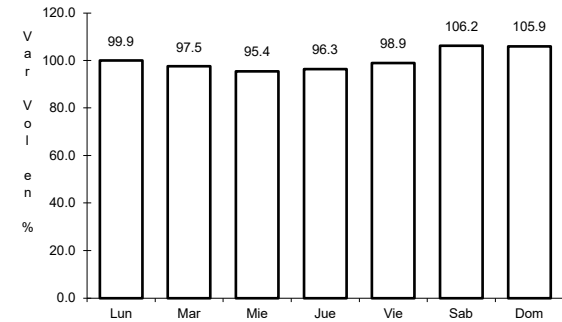
ruta: SON-037



Km: 0.00                      Tipo: 3                      Sent: 1



Km: 6.90                      Tipo: 3                      Sent: 0

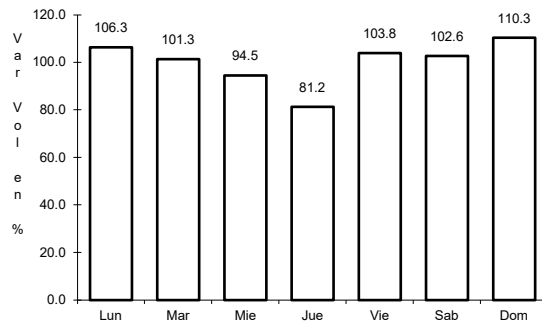


Km: 61.20                      Tipo: 3                      Sent: 0

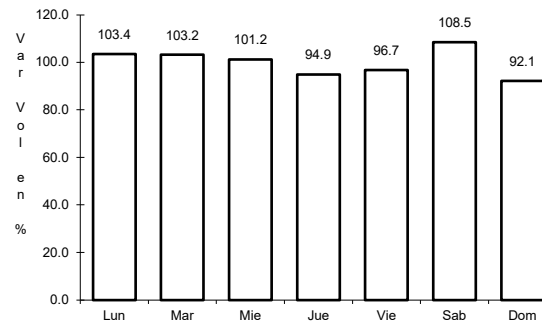
23 CARR: Calle 36 Norte - Puerto de La Libertad

CLAVE: 26117

ruta: SON-029



Km: 0.00                      Tipo: 3                      Sent: 0

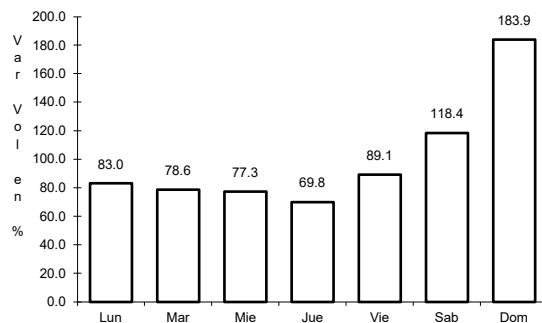


Km: 45.00                      Tipo: 3                      Sent: 0

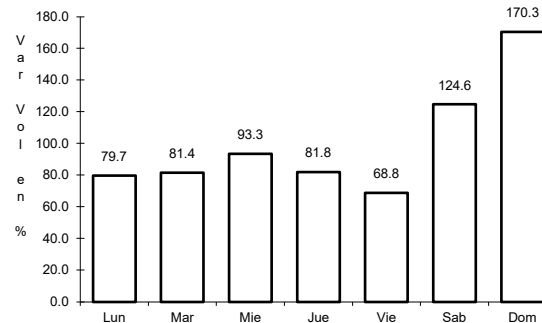
24 CARR: Esperanza - Presa Álvaro Obregón

CLAVE: 26242

ruta: SON-117



Km: 0.00                      Tipo: 3                      Sent: 0

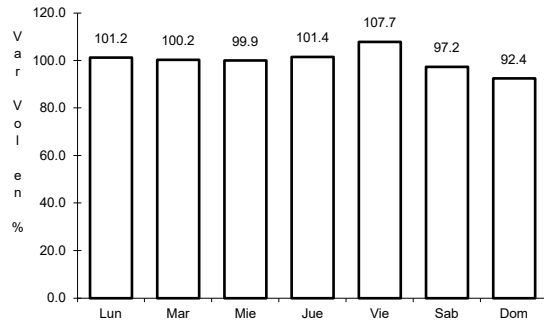


Km: 17.00                      Tipo: 3                      Sent: 0

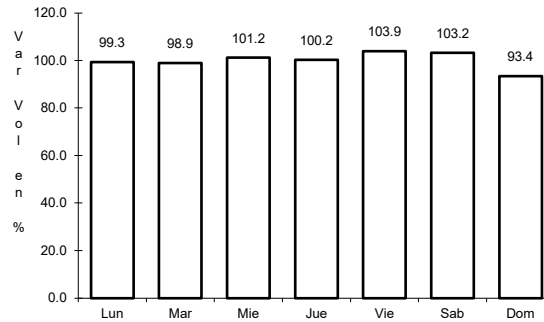
25 CARR: Hermosillo - Bahía Kino

CLAVE: 26109

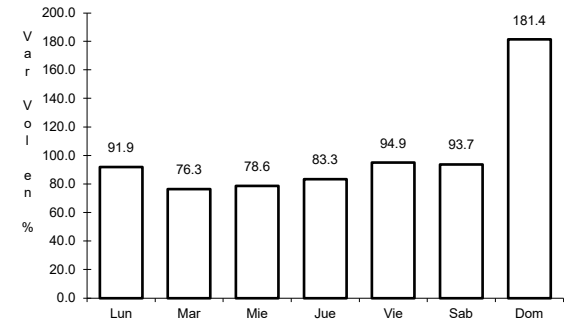
ruta: SON-100



Km: 0.00      Tipo: 3      Sent: 1



Km: 0.00      Tipo: 3      Sent: 2

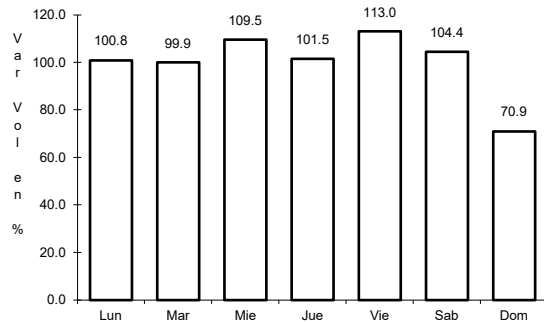


Km: 106.50      Tipo: 1      Sent: 0

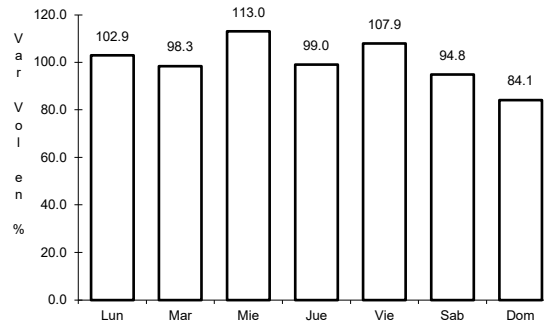
26 CARR: Hermosillo - Sahuaripa

CLAVE: 26230

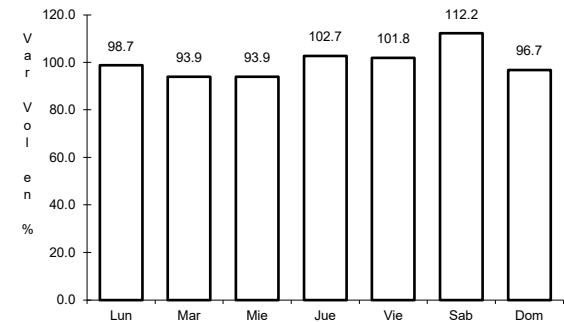
ruta: SON-020



Km: 0.00      Tipo: 3      Sent: 1



Km: 0.00      Tipo: 3      Sent: 2

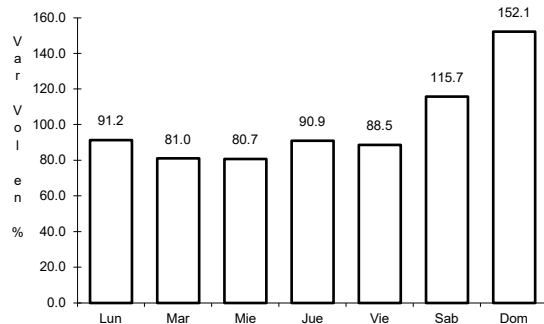


Km: 88.00      Tipo: 3      Sent: 0

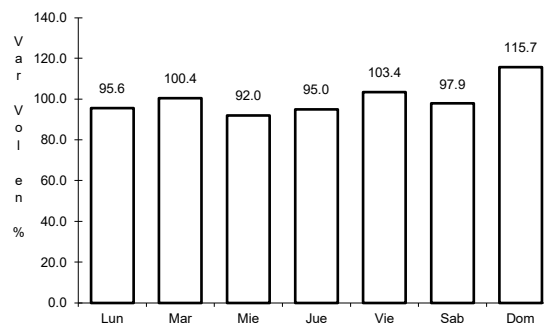
27 CARR: Hornos - San Nicolás

CLAVE: 26243

ruta: SON-012



Km: 0.00      Tipo: 3      Sent: 0

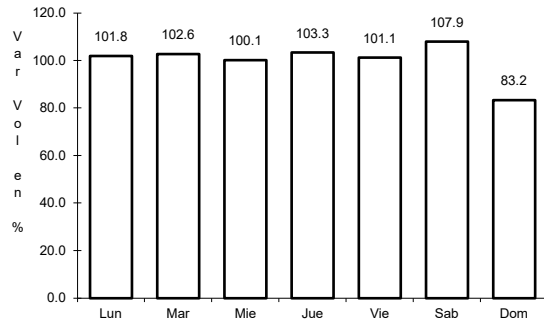


Km: 58.00      Tipo: 1      Sent: 0

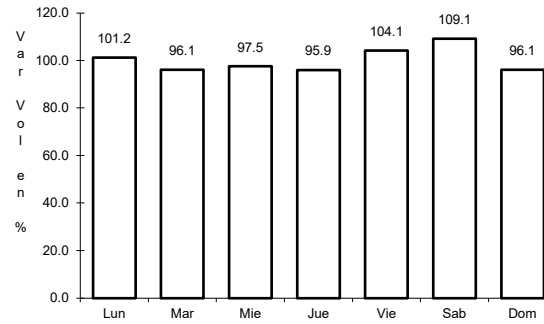
28 CARR: Huatabampo - Bacabachi

CLAVE: 26237

ruta: SON-176



Km: 0.00                      Tipo: 3                      Sent: 0

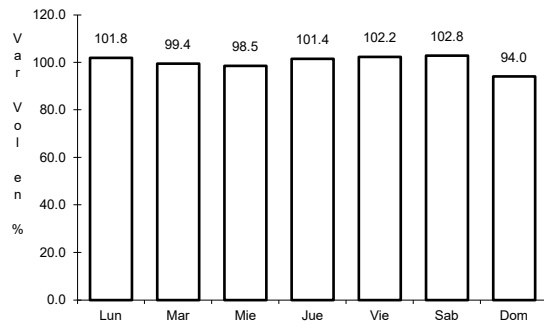


Km: 29.00                      Tipo: 1                      Sent: 0

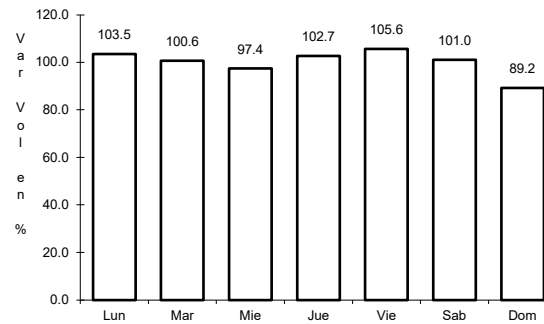
29 CARR: La Alameda - El Sahuaro

CLAVE: 26234

ruta: SON-037



Km: 0.00                      Tipo: 3                      Sent: 0

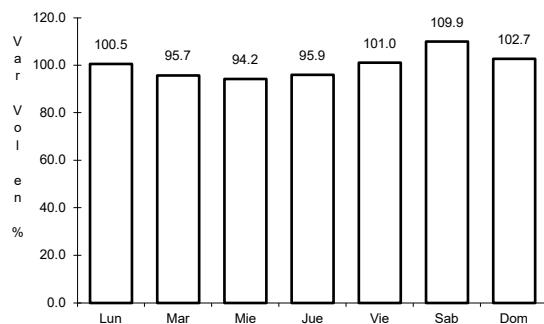


Km: 47.00                      Tipo: 1                      Sent: 0

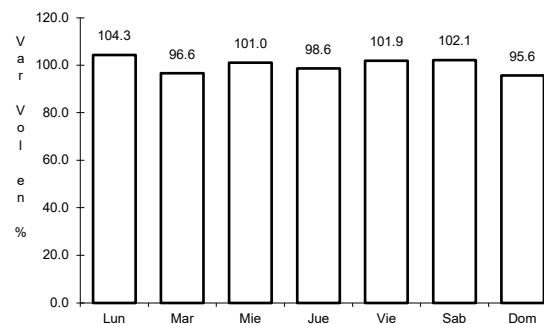
30 CARR: Mazocahui - Cananea

CLAVE: 26118

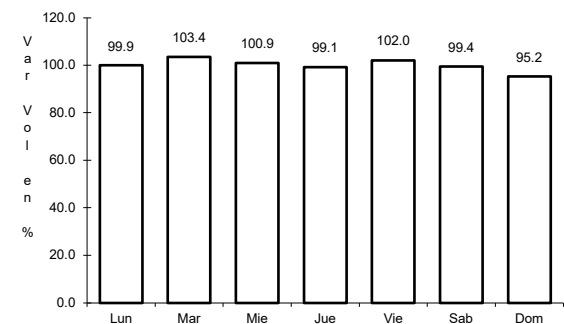
ruta: SON-118



Km: 0.00                      Tipo: 3                      Sent: 0



Km: 98.00                      Tipo: 1                      Sent: 0

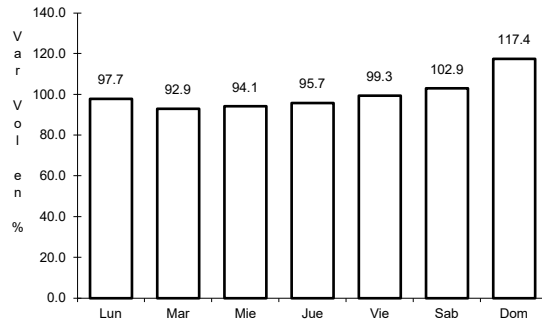


Km: 206.30                      Tipo: 1                      Sent: 0

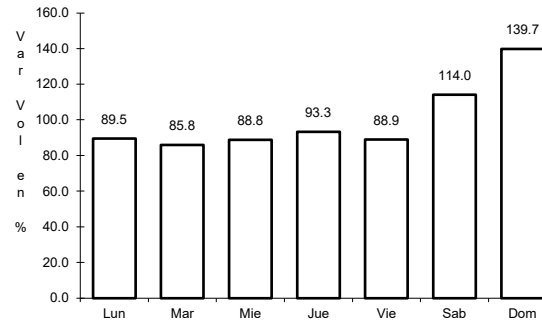
31 CARR: Navojoa - Álamos

CLAVE: 26240

ruta: SON-013



Km: 0.00      Tipo: 3      Sent: 0

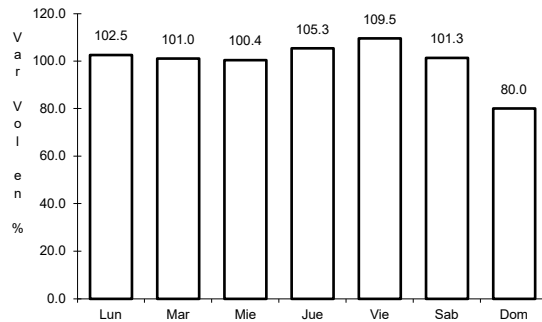


Km: 52.80      Tipo: 1      Sent: 0

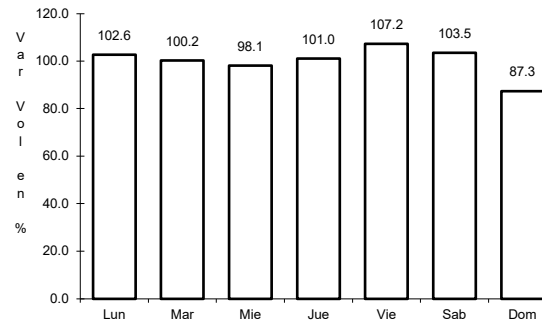
32 CARR: Navojoa - Yavaros

CLAVE: 26229

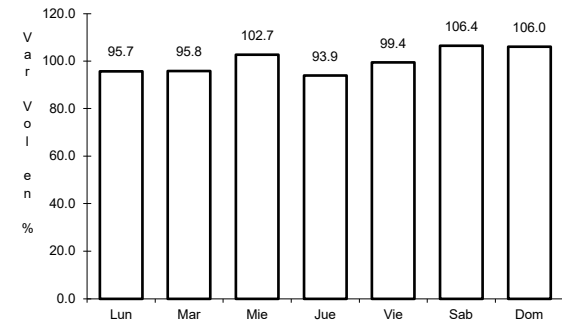
ruta: SON-056



Km: 0.00      Tipo: 3      Sent: 1



Km: 0.00      Tipo: 3      Sent: 2

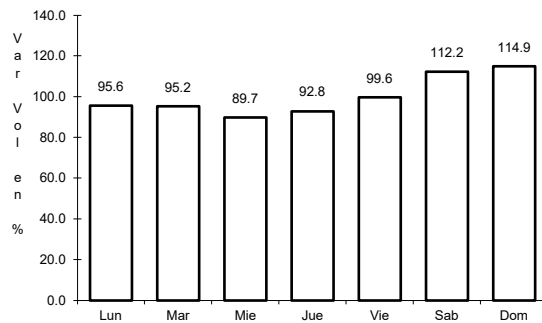


Km: 55.00      Tipo: 1      Sent: 0

33 CARR: Nogales - San Antonio

CLAVE: 26110

ruta: SON

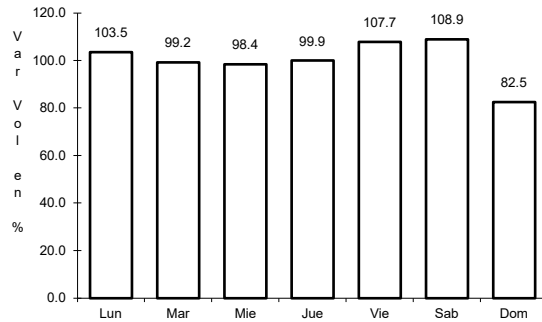


Km: 58.00      Tipo: 1      Sent: 0

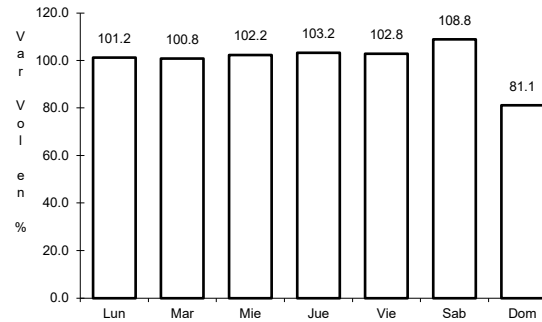
34 CARR: Ramal a Aeropuerto de Guaymas

CLAVE: 26568

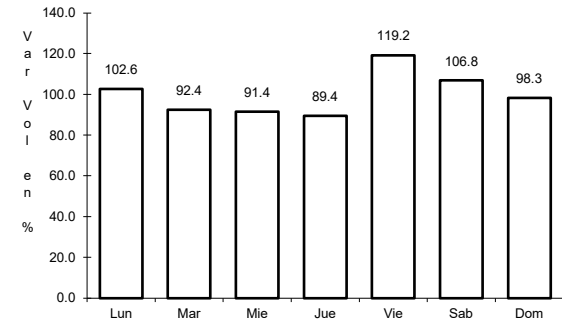
ruta: SON



Km: 0.00      Tipo: 3      Sent: 1



Km: 0.00      Tipo: 3      Sent: 2

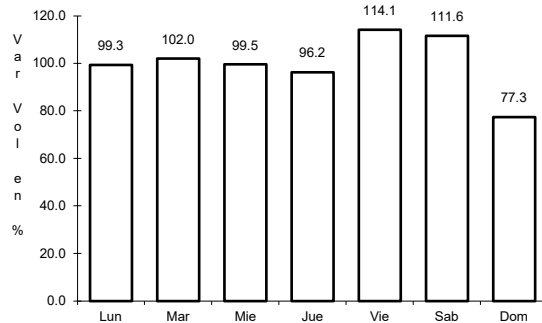


Km: 3.00      Tipo: 3      Sent: 0

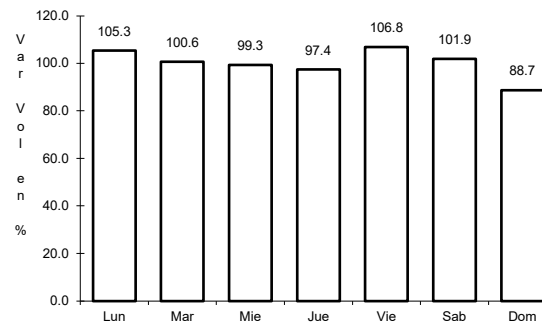
35 CARR: San Luis Río Colorado - Golfo de Santa Clara

CLAVE: 26226

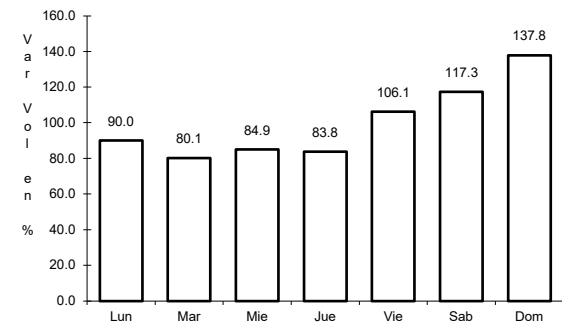
ruta: SON-040



Km: 0.00      Tipo: 3      Sent: 1



Km: 0.00      Tipo: 3      Sent: 2

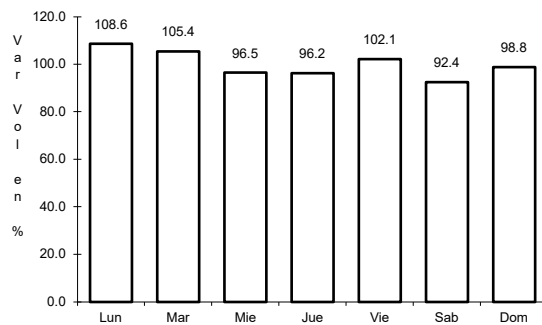


Km: 114.30      Tipo: 1      Sent: 0

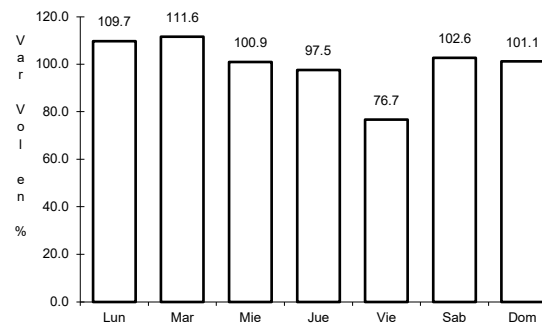
36 CARR: Sonoita - Pitiquito

CLAVE: 26022

ruta: SON

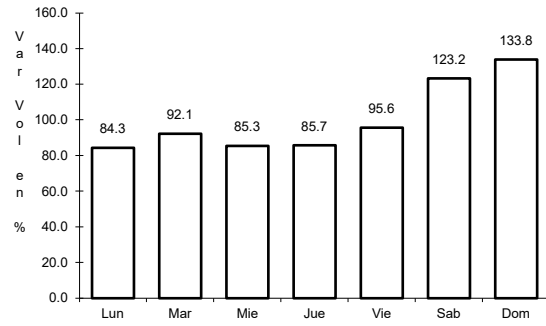


Km: 0.00      Tipo: 3      Sent: 0



Km: 170.00      Tipo: 1      Sent: 0

38 CARR: T. C. (Hermosillo - Nogales) - Huásabas

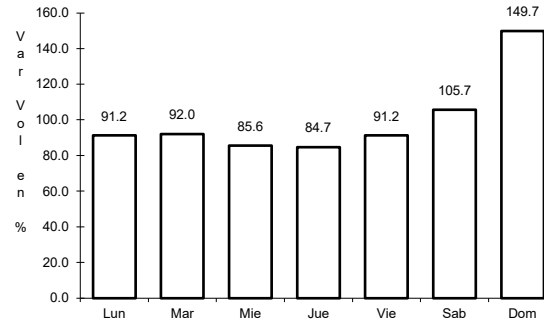


Km: 0.00

Tipo: 3

Sent: 1

CLAVE: 26231

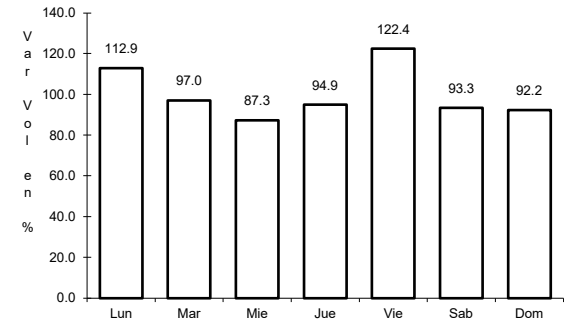


Km: 0.00

Tipo: 3

Sent: 2

RUTA: MEX-014-SON



Km: 212.50

Tipo: 1

Sent: 0

